

LAUR A ASHLEY

SINCE 1953

35mm Wood Ribbed Ball Curtain Pole Kit

Assembly Instructions

Before You Start

- We suggest you spend time reading through these instructions before you start.
- Carefully check that you have all the parts, correct tools, and plenty of space before beginning assembly.
- Place all components on top of the carton box or on a clean floor to protect from damage.
- This product should only be used on a solid mounting at point of fixing. (this is necessary to take the weight of the curtain pole including the curtains).
- Due to the size of the product, we recommend that it is assembled in the room intended for use.
- Ensure the product is fully assembled as illustrated and all fixings are fully tightened before use.
- Wipe occasionally with a clean, soft cloth.

Number of people required to assemble.

One person who is competent with installation, however we recommend two people assemble this item.

Assemble time

50 Minutes.

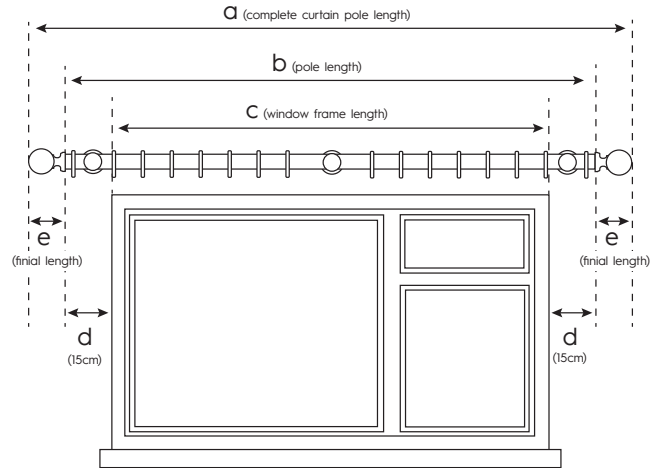
Tools required

- Electric Drill with masonry bit
- Cross head screwdriver
- Spirit level and tape measure
- Saw

Please keep out the reach of young children. Small parts are a choking hazard.

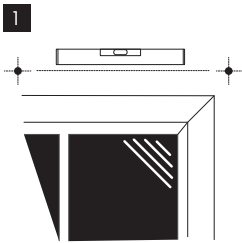
Measuring For A Curtain Pole

Window Frame length + 30cm + Finial length = Desired Curtain Pole length

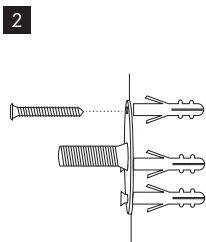


- 1) Measure the window frame that the curtain pole is to go above (shown in figure c).
- 2) Add an extra 30cm (15cm each side) to ensure the curtains clears the window and can be drawn back (shown in figure d). Please note: 15cm is the industry standard however, heavy curtains may require a little more space.
- 3) Allow room for your chosen finial design. (shown in figure e).
- 4) You now know the size of the pole required to fit the window.

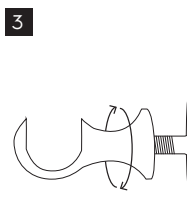
Installing Your Curtain Pole



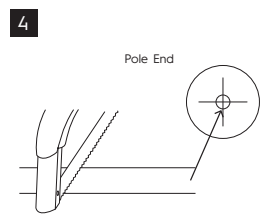
Mark the positions of the end brackets 100mm (approx.) either side of the window frame also the centre position for poles longer than 180cm.



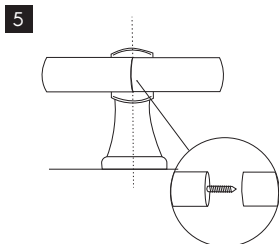
Drill the holes for the supplied wall plugs and fit the bracket mounting plate. Alternative wall fixings should be used where necessary.



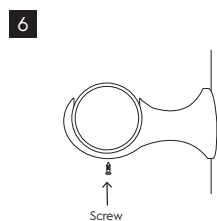
Screw the bracket onto the back plate until tight ensuring the cup is facing upwards.



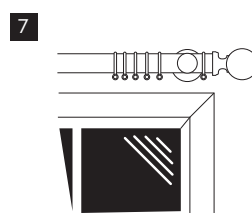
Measure the pole and cut to the required length. Poles over 180cm ensure both halves are cut to the same length. Drill 3mm holes exactly in the centre of the pole ends.



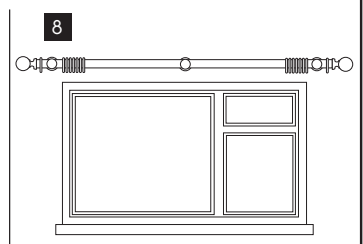
For Poles over 180cm - use the double ended joining screw to connect two halves and align the join in the centre of the middle bracket.



Fit the required number of rings (unless fitting eyelet curtains) and position the pole onto the brackets before securing with the small screw provided.



Position the last ring on the outer side of the end bracket before attaching the finials and securing by tightening the screw.



The curtain pole is now assembled. Please periodically check all fittings and re-tighten as necessary.