

# Dry Contact Transmitter

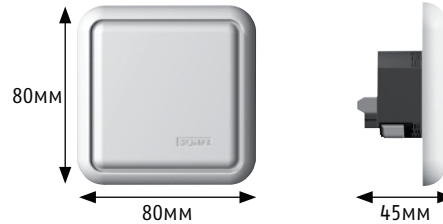
## TECHNICAL SPECIFICATION

### Dry Contact Transmitter

Ref: 1810334



### DIMENSIONS



### TECHNICAL CHARACTERISTICS

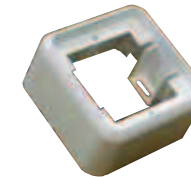
Supply voltage	230 Vac
Supply tolerance	205 - 255 Vac
Radio frequency	433.42 MHz
Radio range - unobstructed	200M
Radio range - obstructed	20M
Operating temperature	5°C to 40°C
Index protection	IP 30
Mounting options	Recess (flush) or Wall Mount
Colour	White

### Features & Benefits

The Dry Contact Transmitter is designed to interface with home automation control units to provide control of Somfy RTS powered applications (blinds, awnings, roller shutters, etc.). This is achieved with a dry contact input to provide a single channel RTS radio signal. This unit is mains powered and can be mounted directly to the fixing surface by using a surface mounted box or recess mounted into a standard electrical back box. The radio range is 200M in free space or 20M through 2 concrete walls.

### CONTROL FUNCTIONALITY

- ☑ 230Vac supply
- ☑ Single RTS channel via dry contact signal
- ☑ Surface or flush mount options
- ☑ 5 year warranty



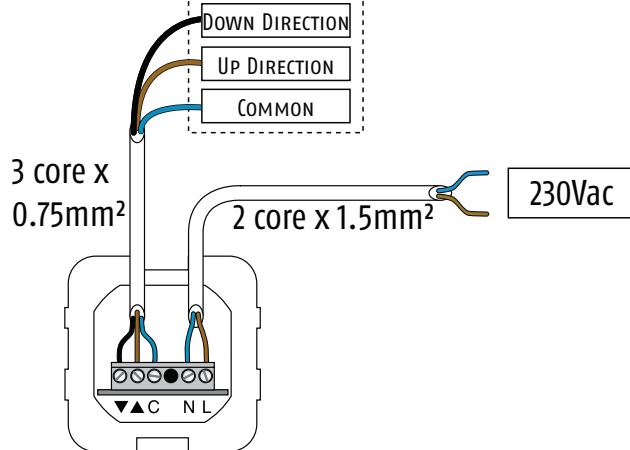
Surface Mounting Box

Ref 9154122

Accessory required when surface mounting the Dry Contact Transmitter.

## WIRING

### Home Automation Control Connection



### Dry Contact Wiring

- '▼' - Down directional wire
- '▲' - Up directional wire
- 'C' - Common

## DRY CONTACT TRANSMITTER CONTROL SCENARIO

