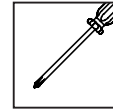
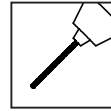
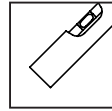
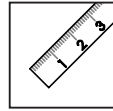
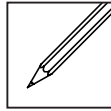


# SWISH VALANCE

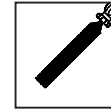
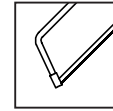
## Fitting Instructions

Please keep for future reference

### Tools required

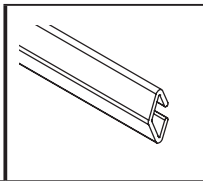
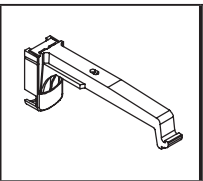
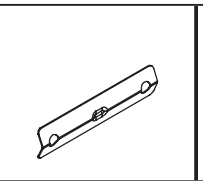
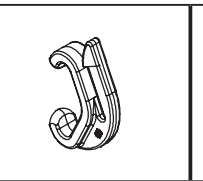
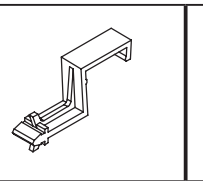
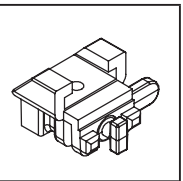


Optional



Please read these instructions carefully and check the contents of the pack before attempting to assemble and fit this product.

### Pack Contents

						
Length	Rail	Brackets	Joiner	Valance Hooks	Retainer	Connectors
125cm	2	3	1	18	2	3
150cm	2	3	1	20	2	3
200cm	2	5	1	28	2	5
250cm	2	5	1	34	2	5
275cm	2	5	1	34	2	5

Should any component be missing, please call the Customer Care Department on **0330 005 2233**.

### Safety Recommendation

Always use a Step Ladder when working at heights.

DO NOT over reach. Always move the Step Ladder so that you are in a safe working position.

DO NOT hold or lean on the valance to support your weight.

We recommend you use two people for installation of larger valance.

Take care when using power tools, use of a Residual Current Device (RCD) is recommended.

Always use eye protection when drilling. Beware of hidden pipe runs and cables.

No liability will be accepted for damage or injury caused by incorrectly installed or assembled product.

PLEASE KEEP OUT OF THE REACH OF YOUNG CHILDREN. SMALL PARTS - CHOKING HAZARD  
PLEASE KEEP THESE INSTRUCTIONS AND THE BATCH CODE ON THE PACKAGING FOR FUTURE  
REFERENCE IN CASE OF ANY QUERIES

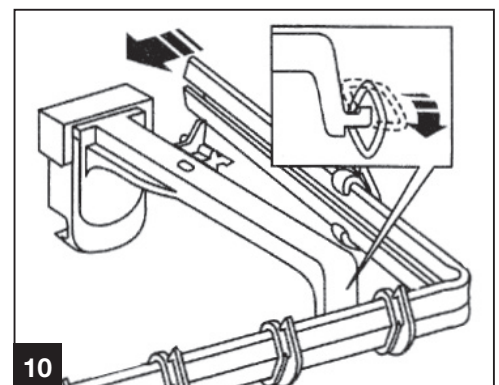
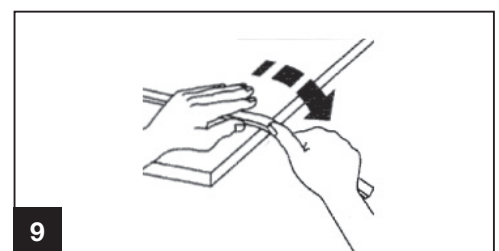
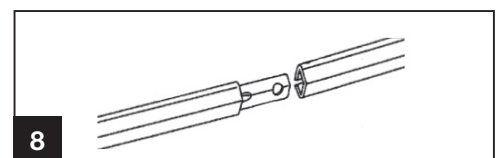
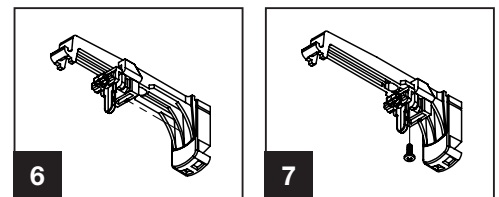
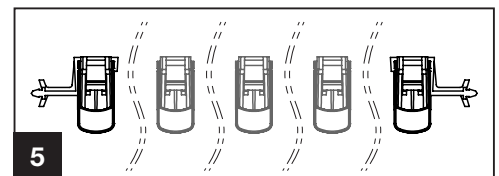
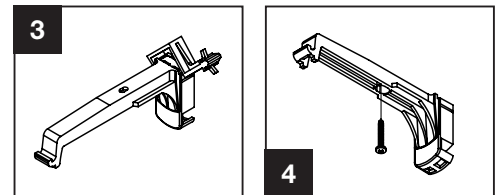
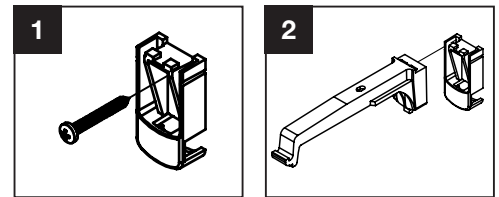
## Positioning the valance

### • Installing with a pre-installed compatible track

1. Remove the existing track and all of the brackets.
2. The drilled holes will be used to refit the valance bracket.
3. If the drilled holes for the end bracket are more than 1.5cm from the end of the installed track, or if the drilled holes on the wall are less than 2.5cm from the ceiling, or if the drilled holes on the ceiling are less than 13.5cm from the wall, you will need to re-drill their position by following the relevant steps in the next sub-section.

### • Installing with an uninstalled compatible track, with a pre-installed non-compatible track/pole (wall fix only), or on its own.

1. Mark a line 4cm above the existing curtain track/pole or 10cm above the window if nothing is installed.
2. Mark the position for the each end brackets 1.5cm inside the existing/required curtain track/pole length.
3. Equally spread the position of all remaining brackets.
4. Drill the correct size hole, fit the wall plug (if appropriate).



## Installing the brackets.

### • For wall installation:

1. Screw the valance bracket backplates (Fig.1)
2. Clip the valance bracket arms into the backplates (Fig.2). For the 2 end brackets, clip on the end retainers (Fig.3) pointing away from the centre of the track (Fig.5). Go to the next section.

### • For ceiling installation:

1. Clip the valance bracket backplate onto the arm (Fig.2) and clip the end retainers on 2 brackets, pointing in opposite directions. (Fig.3)
2. Screw the brackets to the ceiling (Fig.4). Place the brackets with end retainer on each end of your installation, the retainer pointing away from the centre of the track (Fig.5).

## 3. Installing compatible curtain track only.

1. Slide the system connectors onto the valance arms (Fig.6) and secure in place with the screw provided. (Fig.7)
2. Install the track using the leverlock system of the connector.

## Cutting and installing the valance track.

1. Calculate the width of the valance rail required by measuring the distance between the center of the end brackets and adding 36cm.
2. Join the valance track. (Fig.8)
3. Carefully cut the track equally at each end to the required length using a hacksaw and smooth the cut edges.
4. Slide the valance hook onto the valance track leaving enough hooks to cover the valance return.
5. Mark 13.5cm from each end of the valance track and rub with a cloth to bend at 90° on the mark to create the valance returns. (Fig.9)  
Note: Rubbing will warm the track allowing it to bend more easily.
6. Slide the remaining valance hooks equally on each end of the valance track.
7. Clip the valance track onto the brackets and clip the valance returns onto the end retainers. (Fig.10)