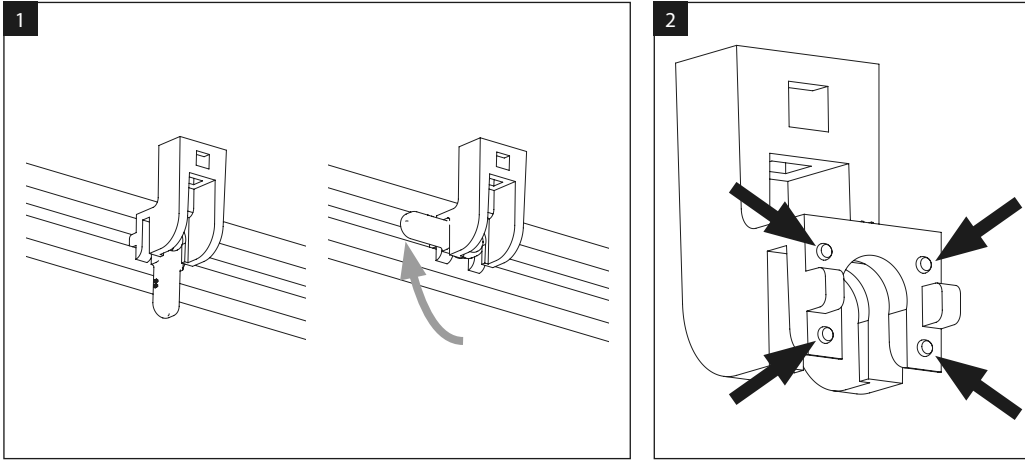


## ALUGLYDE/SOLOGYDE BRACKET ADJUSTMENT

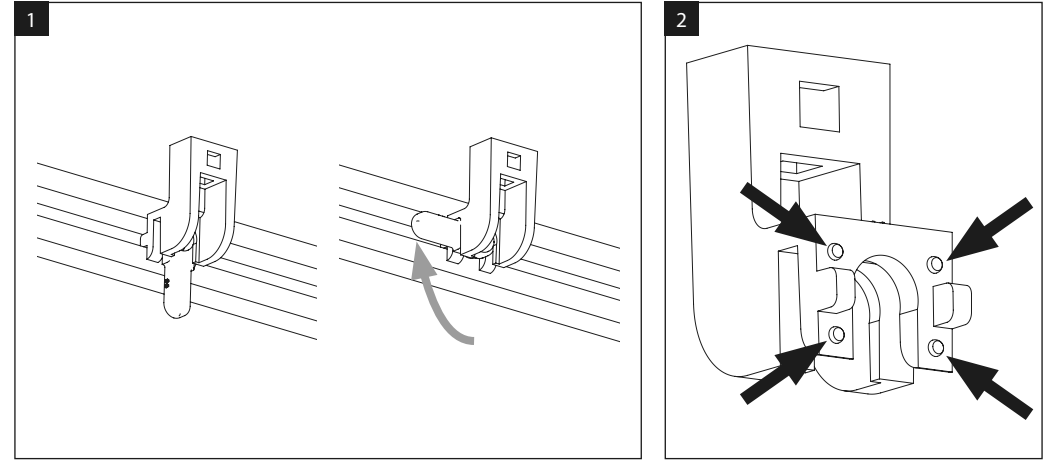
If the lever is difficult to turn to the lock position (horizontal position as shown fig.1), Sand down slightly the 4 upstands on the bracket as shown by the black arrows in fig.2. Please use rough sandpaper or a file, Continue until the lever is able to lock horizontally in the bracket.



INST103-TM-01

## ALUGLYDE/SOLOGYDE BRACKET ADJUSTMENT

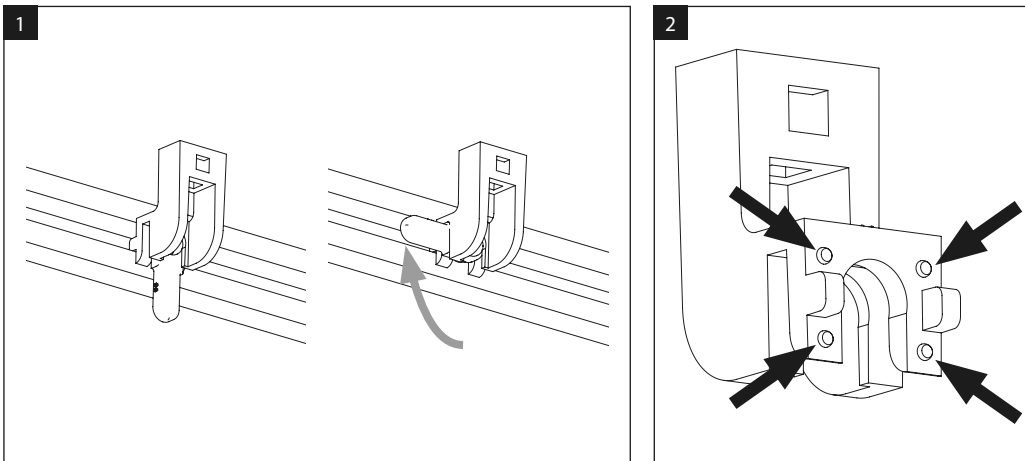
If the lever is difficult to turn to the lock position (horizontal position as shown fig.1), Sand down slightly the 4 upstands on the bracket as shown by the black arrows in fig.2. Please use rough sandpaper or a file, Continue until the lever is able to lock horizontally in the bracket.



INST103-TM-01

## ALUGLYDE/SOLOGYDE BRACKET ADJUSTMENT

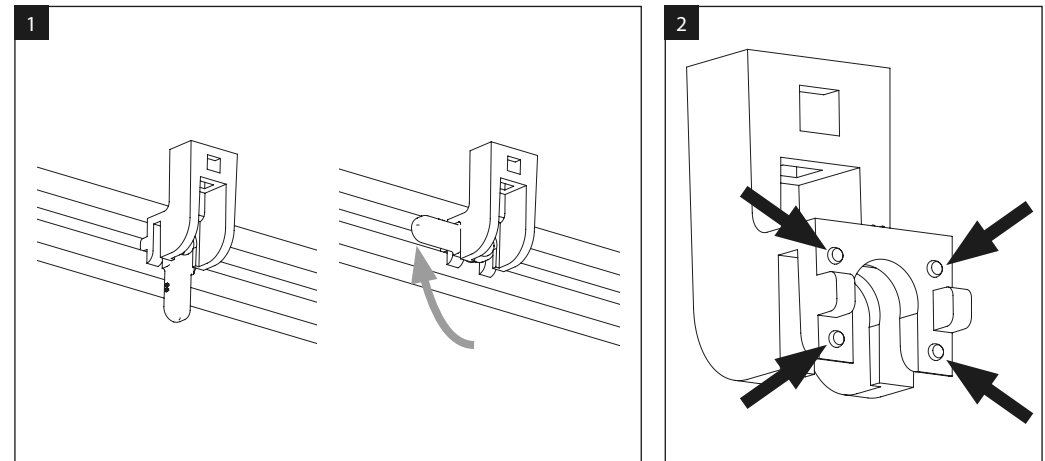
If the lever is difficult to turn to the lock position (horizontal position as shown fig.1), Sand down slightly the 4 upstands on the bracket as shown by the black arrows in fig.2. Please use rough sandpaper or a file, Continue until the lever is able to lock horizontally in the bracket.



INST103-TM-01

## ALUGLYDE/SOLOGYDE BRACKET ADJUSTMENT

If the lever is difficult to turn to the lock position (horizontal position as shown fig.1), Sand down slightly the 4 upstands on the bracket as shown by the black arrows in fig.2. Please use rough sandpaper or a file, Continue until the lever is able to lock horizontally in the bracket.



INST103-TM-01