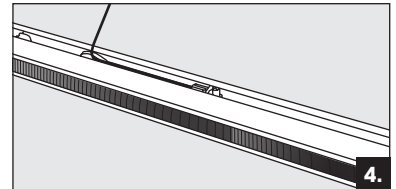
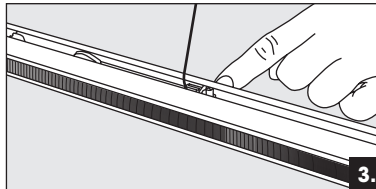
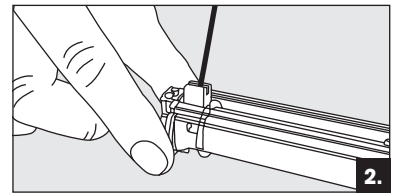
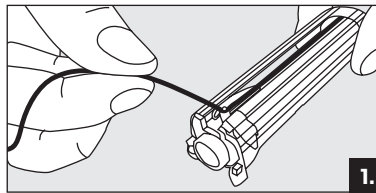


# Professional Dual Rise Roman Blind System



## how to... adjust your spools...

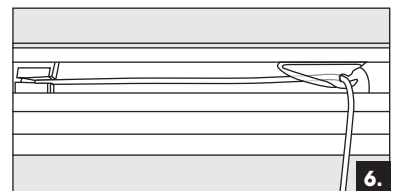
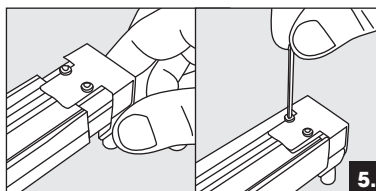
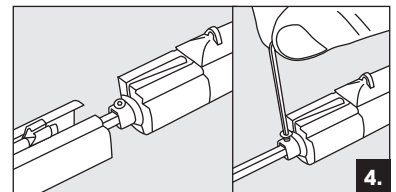
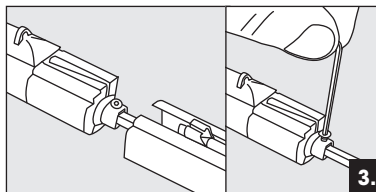
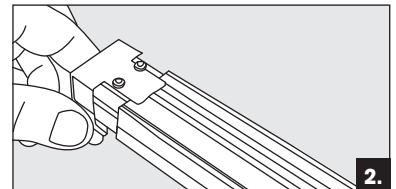
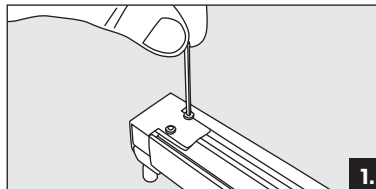
- Step 1.** Ensure the cords are fully unwound.
- Step 2.** Remove the cord from the cord guide.
- Step 3.** Pull the grey button..
- Step 4.** Re-position your spool and push each grey button down to lock them into place.
- Step 5.** Re-attach the cord to the cord guide, at the opposite end of the spool.



**IMPORTANT:** please check all grey buttons have been pushed down and the cord is attached to the cord guide before operating your blind.

## how to... change the control side of your Dual Rise Roman Blind...

- Step 1.** Using a T10 torx allen key undo both screws on the underside of the blind being careful not to fully undo.
- Step 2.** Pull out the Dual Rise gear mechanism from the headrail then turn the blind back over.
- Step 3.** Pull the mechanism completely out of the headrail and undo the screw which secures the axle rod to the gear housing.
- Step 4.** Re-fit the axle rod at the opposite end of the blind making sure its securely held in place, then push the Dual Rise gear mechanism back inside the headrail about ¾ of the way in.
- Step 5.** Turn the headrail over and lift the flap up and push the gear housing all the way in securely, then tighten both screws with a T10 torx allen key.
- Step 6.** Re-adjust the position of your spools accordingly making sure both the grey buttons are pushed down firmly and the cord is properly fed through the cord guide.



## how to... fit a longer chain or wand to your Dual Rise Roman Blind...

- Step 1.** Pull back the white cover and remove the chain from the clear clip.
- Step 2.** Slide the cord pull up the chain to reveal the connector.
- Step 3.** Unclip the cord connector from the chain.
- Step 4.** Using a small pick or similar pull back the white cap from one of the Dual Rise cords to reveal the ball chain connector.
- Step 5.** Attach your new chain or wand to the ball chain connector.
- Step 6.** (Skip this step if you have fitted a wand) Take your chosen cord pull and pass your chain through the small opening then fit the 0908R connector to the bottom of the chain. Repeat steps 4, 5 & 6 for the other Dual Rise cord.

