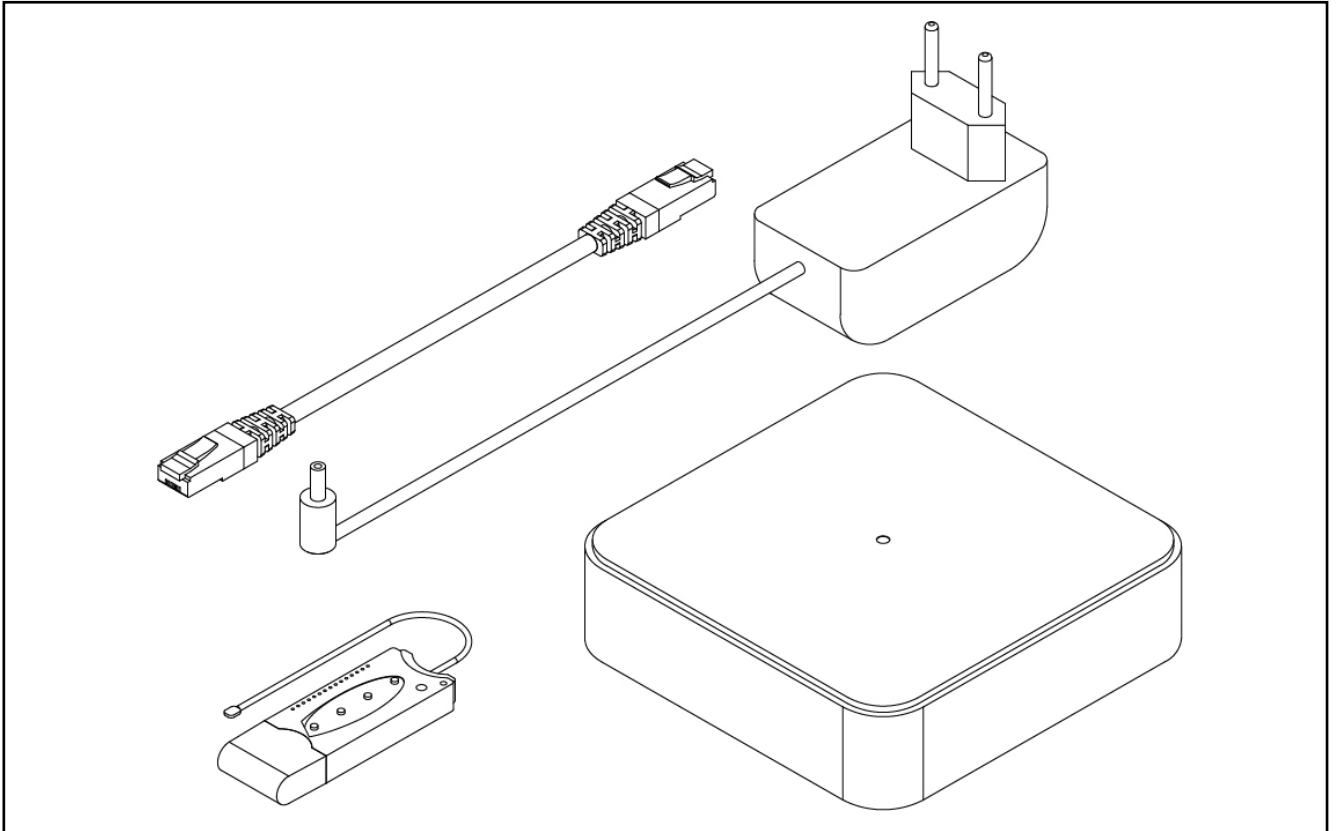


Move Guide  
July 2021

EN



## Content

1	Device Set-Up .....	3
1.3	Wired Connection .....	3
2	Identify and rename products .....	6
3	Create additional rooms with products .....	6
4	Create Scenes .....	7
4.5	Example 1: Blinds Down .....	8
4.22	Example 2: Blinds Up .....	11
4.40	Example 3: Blinds Stop .....	14
4.57	Example 4: Timer Programming .....	17
4.75	Example 5: Astronomic Programming .....	20
5	Adding additional users .....	23
6	Remote Access and Voice Control .....	24
7	System Master Reset .....	25
8	System Backup .....	26
9	System Restore .....	27

## 1 Device Set-Up



Download Move App onto your device (IOS, Android).

### 1.1



After programming all your products onto the transmitter stick (see separate instructions) plug the stick into the server unit.

### 1.2



Connect the Move Server to mains supply.

White light will flash whilst the server starts its boot process.

### 1.3 Wired Connection



For a wired connection repeat steps 1 & 1.1,1.2.

Connect move to your router / ethernet switch with network cable.

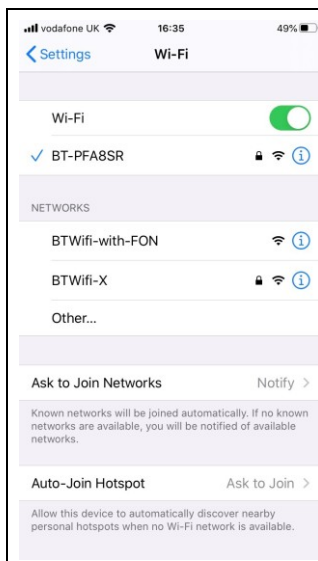
Note: Setup is as per steps 1.6 onwards.

### 1.4



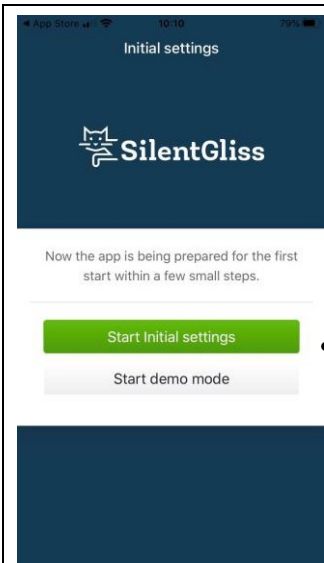
White light will turn to blue flashing light. This now ready for connection.

### 1.5



Ensure your device is connected to the **same wireless network as the server unit is!**

### 1.6



Initial settings

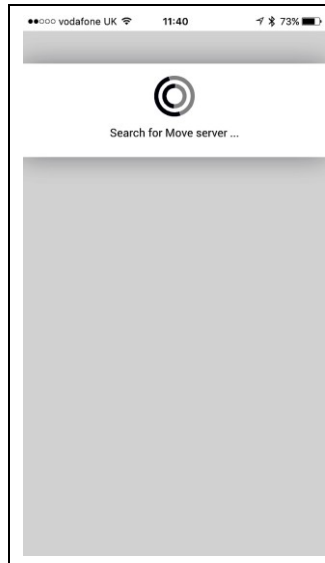
Now the app is being prepared for the first start within a few small steps.

Start Initial settings

Start demo mode

Open app and select "Start Initial settings".

### 1.7



Search for Move server ...

Your device will search and find the Server Unit.

### 1.8



Server selection

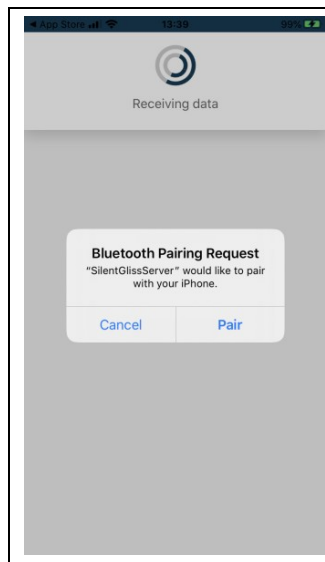
Configure WLAN server

Manual Settings

Save

Press "Configure WLAN server".

### 1.9



Receiving data

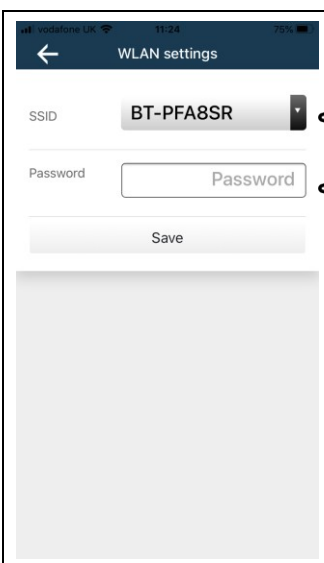
Bluetooth Pairing Request

"SilentGlissServer" would like to pair with your iPhone.

Cancel Pair

Select pair to make the connection via Bluetooth.

### 1.10



WLAN settings

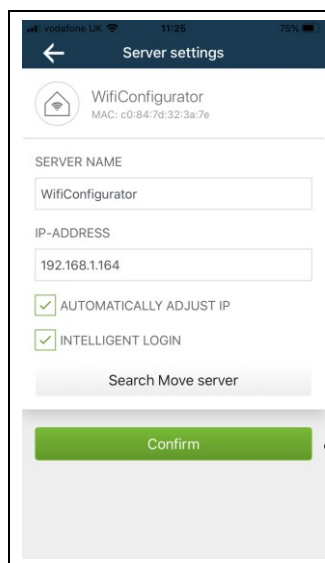
SSID: BT-PFA8SR

Password: Password

Save

Select the correct WIFI service that your device is connected too and enter the password. Press "Save".

### 1.11



Server settings

WifiConfigurator

MAC: c0:84:7d:32:3a:7e

SERVER NAME: WifiConfigurator

IP-ADDRESS: 192.168.1.164

AUTOMATICALLY ADJUST IP

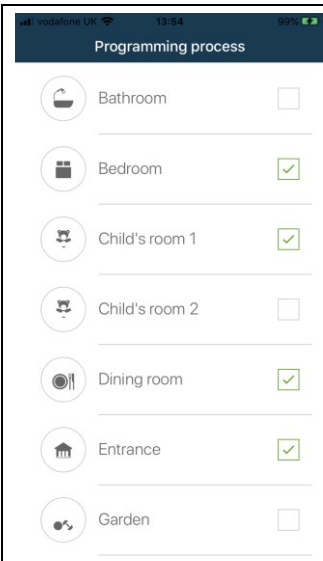
INTELLIGENT LOGIN

Search Move server

Confirm

Select the server name or change it to a name of your choice and confirm.

### 1.12



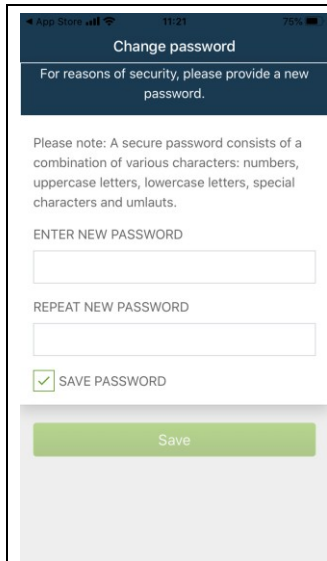
Now create the required number of rooms in your project.

Press "Save".

**\*Note:**

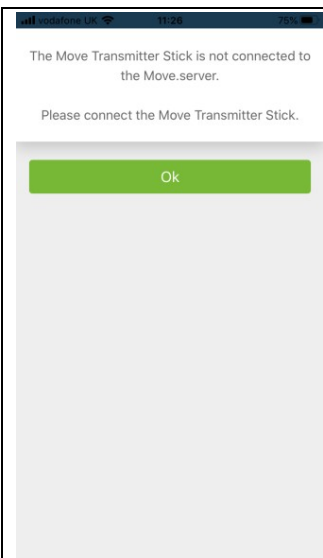
- Service is default for all products it cannot be removed.
- **Technique** can be unchecked.

### 1.13



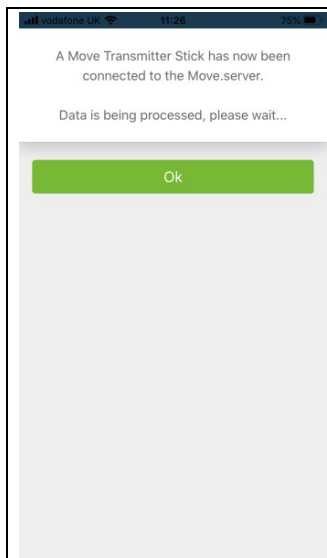
When rooms are created, please create an administrator password.

### 1.14



If the transmitter stick is not connected to the USB port, please do so now.

### 1.15



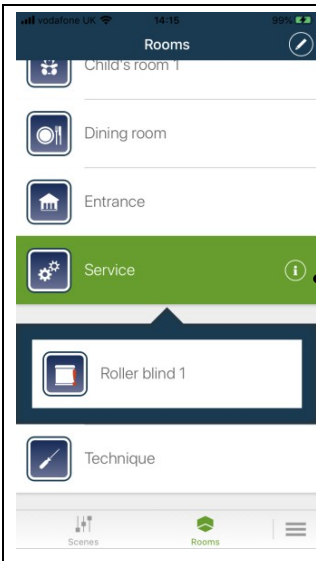
Press "OK" and the data from the 15 channels will be recorded to the Move Server.

### 1.16



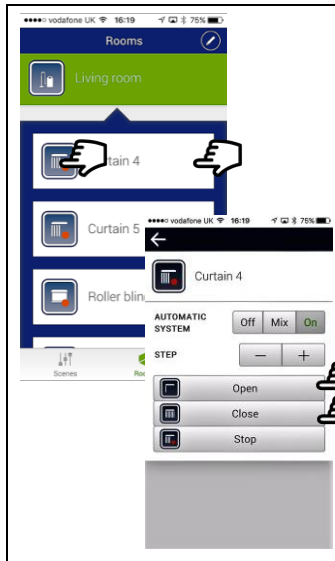
If all steps are completed and correct the top light will change to solid green.

## 2 Identify and rename products



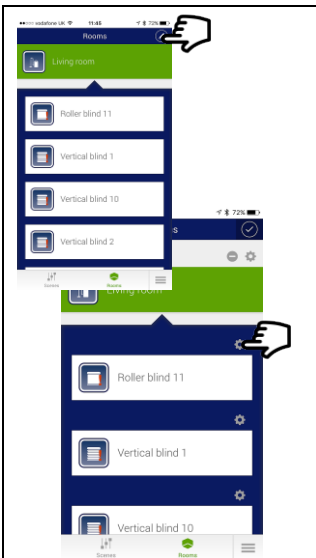
The default room “Service” will appear. Select it to reveal all the products that have been programmed to the transmitter stick.


### 2.1




The product descriptions are initially random. Select the pictogram on the first product to activate it. Or select the panel to the open control menu. Once identified you can now rename it.

### 2.2




To rename a product go into Admin and then 

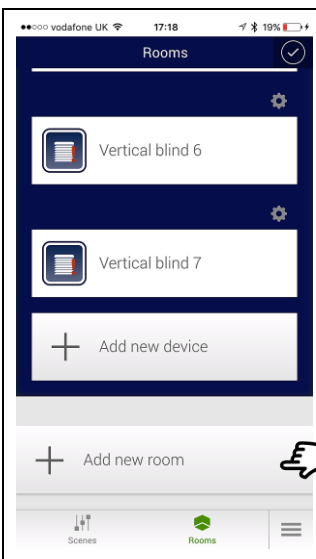
### 2.3



Select the pictogram to change it, type in your required product description. Select “Save” repeat for all products.




## 3 Create additional rooms with products



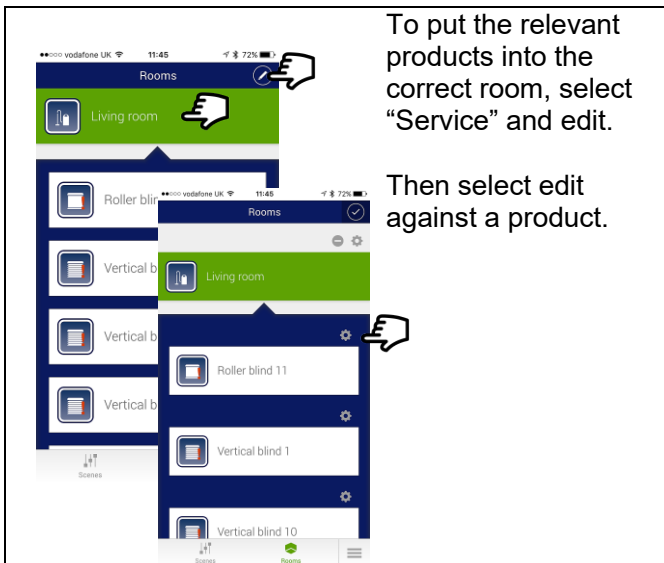
With all the products correctly named the next step is to create additional rooms and put the required products into these rooms. Scroll down and select “Add new room”.

### 3.1



Enter required room name and select required pictogram, select “Save”. Repeat steps 3 & 3.1 until all rooms have been entered.

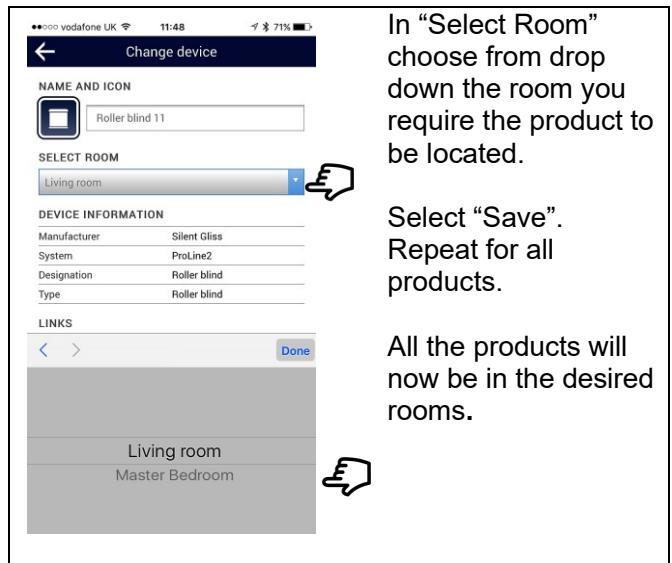
### 3.2



To put the relevant products into the correct room, select “Service” and edit.

Then select edit against a product.

### 3.3




In “Select Room” choose from drop down the room you require the product to be located.

Select “Save”. Repeat for all products.

All the products will now be in the desired rooms.

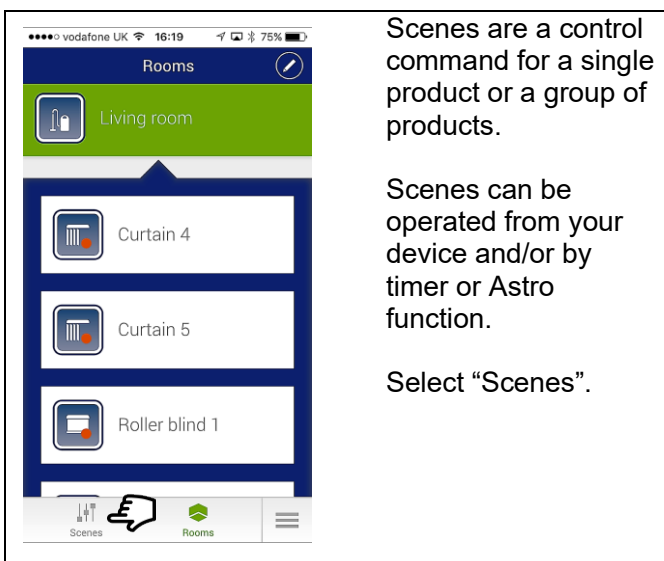
### 3.4



Your device and app is now set up and you can control your products.

All the data input entered will replicate automatically on other devices logged on.

## 4 Create Scenes

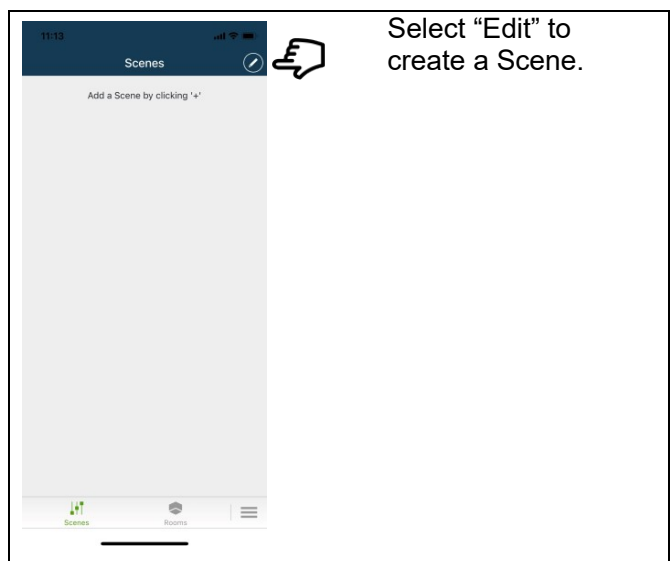


Scenes are a control command for a single product or a group of products.

Scenes can be operated from your device and/or by timer or Astro function.

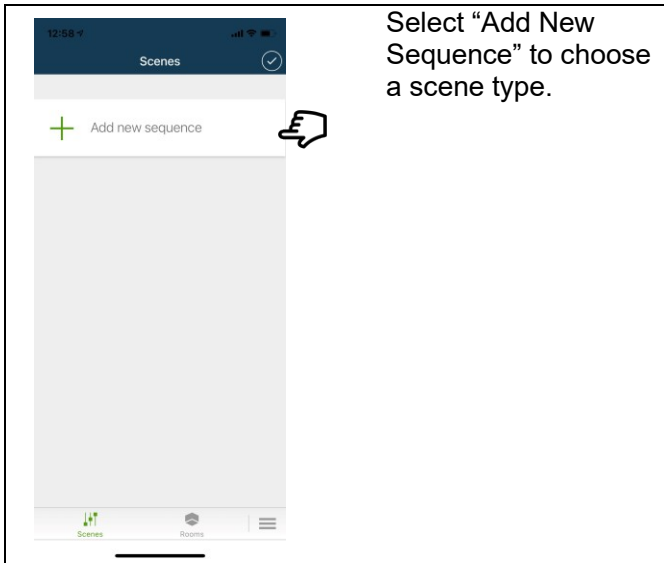
Select “Scenes”.

### 4.1

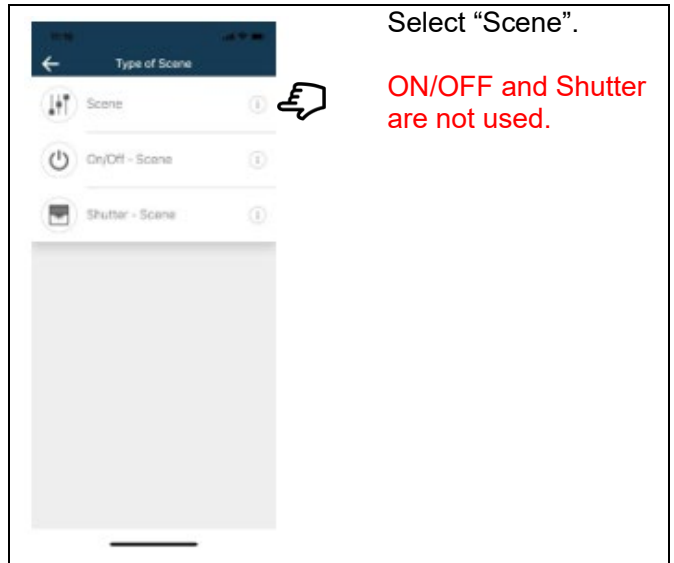


Select “Edit” to create a Scene.

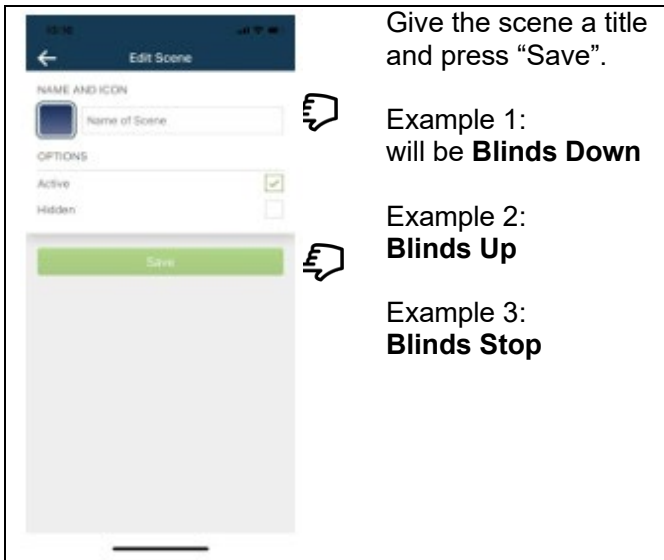
#### 4.2



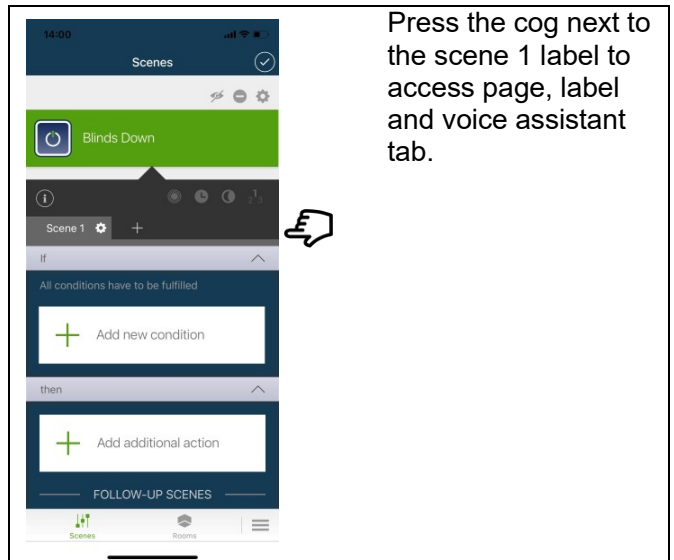
#### 4.3



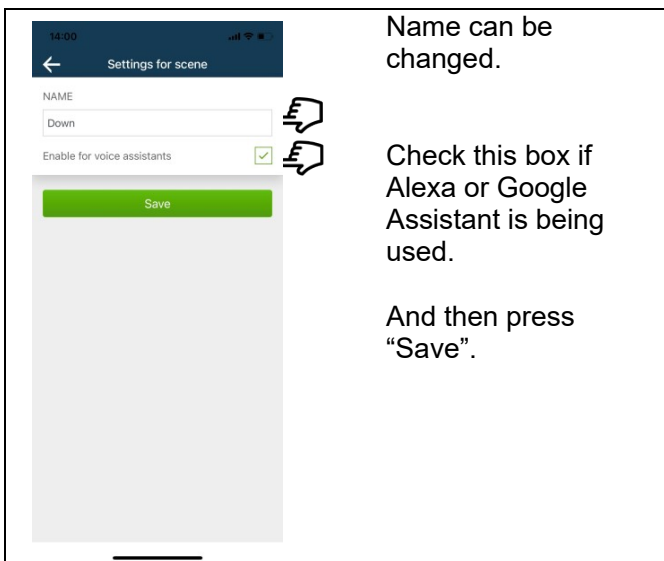
#### 4.4



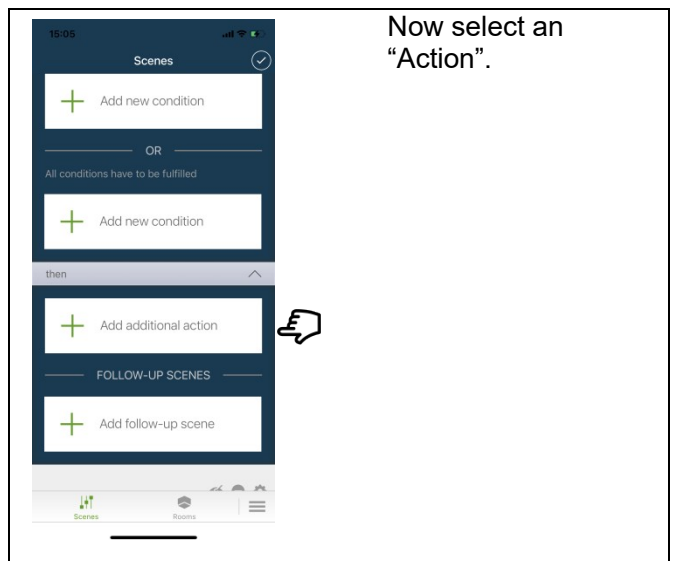
#### 4.5 Example 1: Blinds Down



#### 4.6



#### 4.7



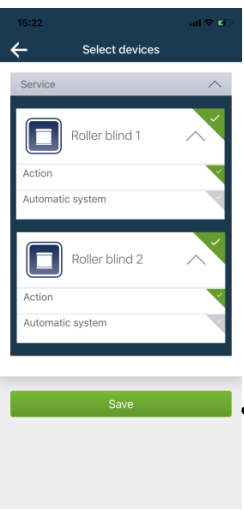


#### 4.8



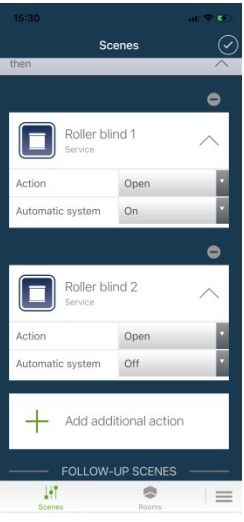
All devices will appear greyed out.

#### 4.9



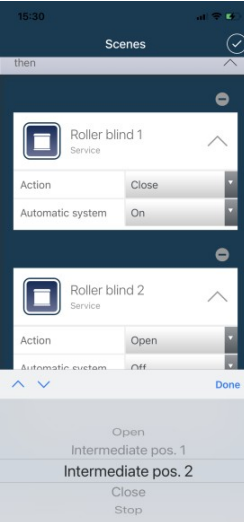
Press all greyed out ticks to turn them green, then press "Save".

#### 4.10



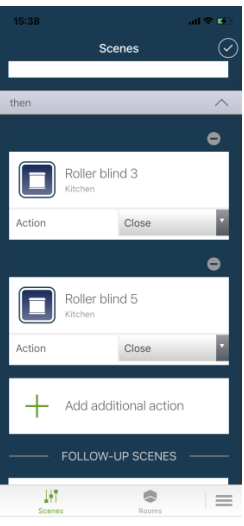
Under "then", you will see the required device. Change action to required.  
**EG. Stop, Close, Open**

#### 4.11



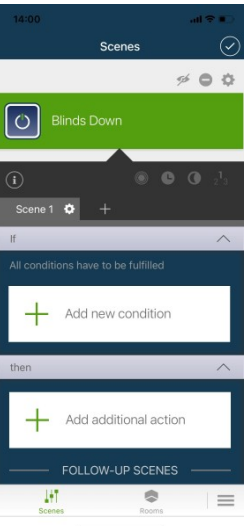
Press the "arrow" next to "Action" and change this to "Close".  
As per example

#### 4.12



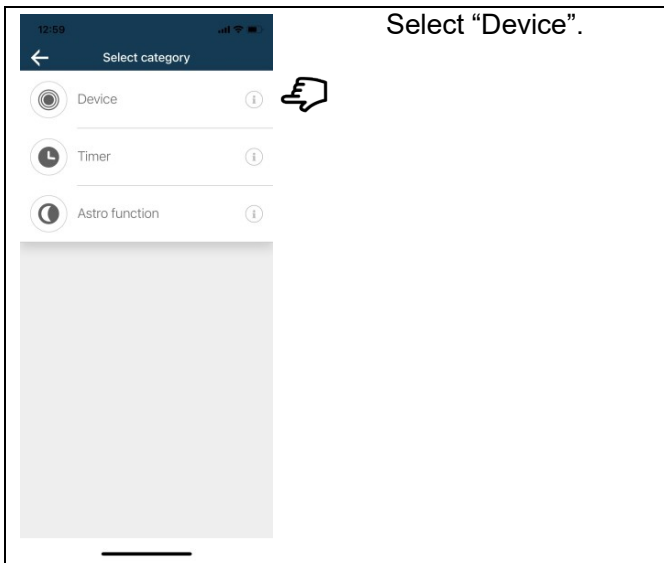
Now you should see both blinds have an action to close when this scene is recalled.

#### 4.13



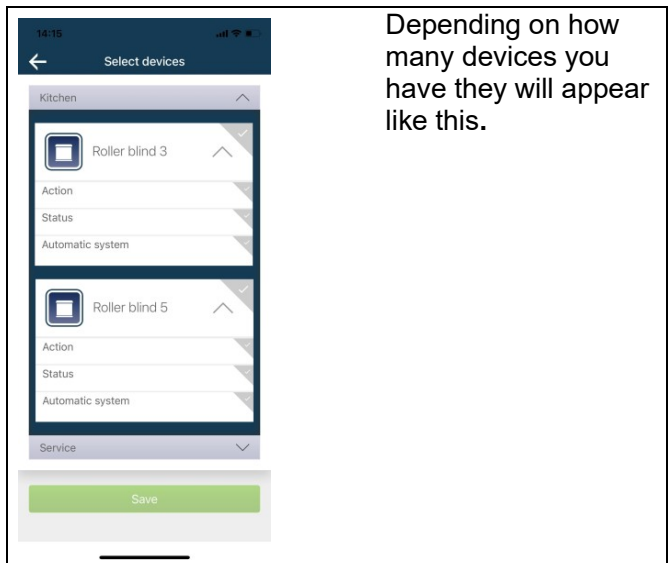
Press "Add New Condition".

#### 4.14



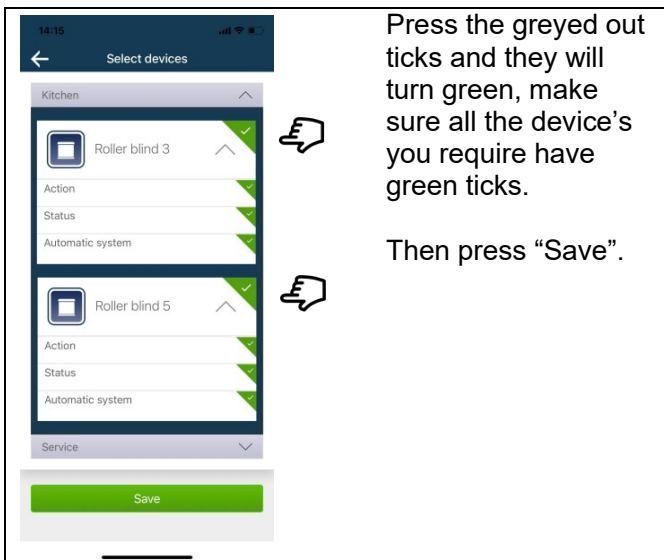
Select "Device".

#### 4.15



Depending on how many devices you have they will appear like this.

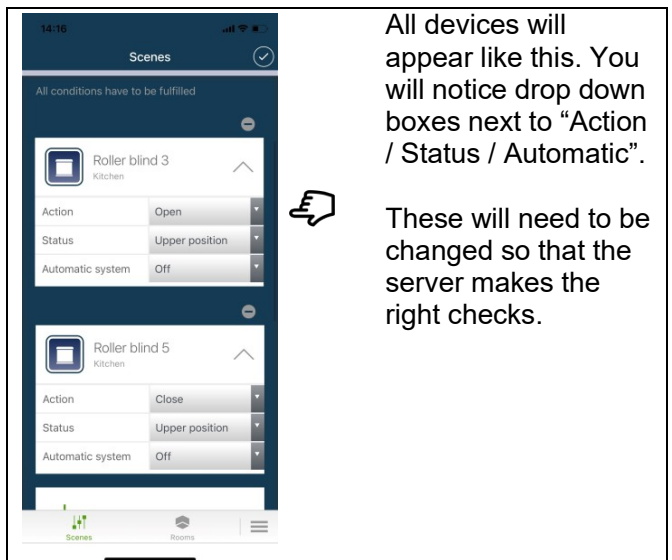
#### 4.16



Press the greyed out ticks and they will turn green, make sure all the device's you require have green ticks.

Then press "Save".

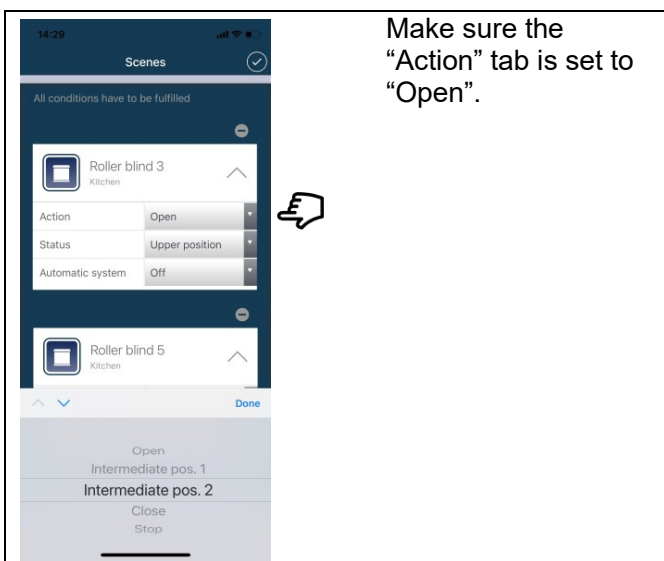
#### 4.17



All devices will appear like this. You will notice drop down boxes next to "Action / Status / Automatic".

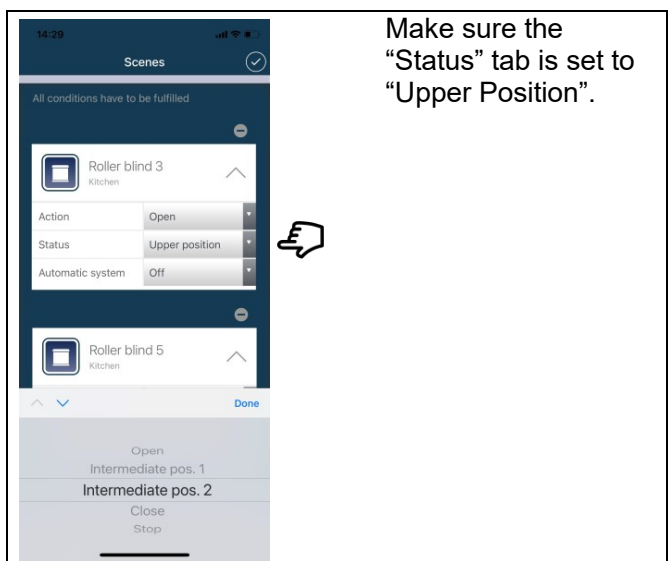
These will need to be changed so that the server makes the right checks.

#### 4.18



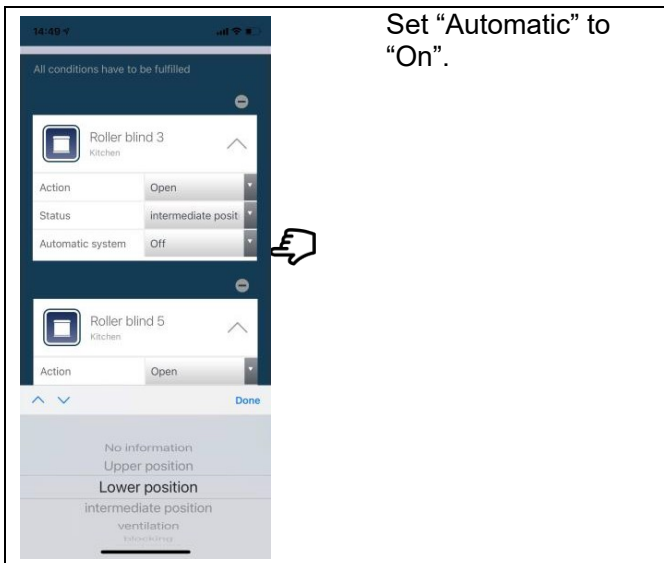
Make sure the "Action" tab is set to "Open".

#### 4.19



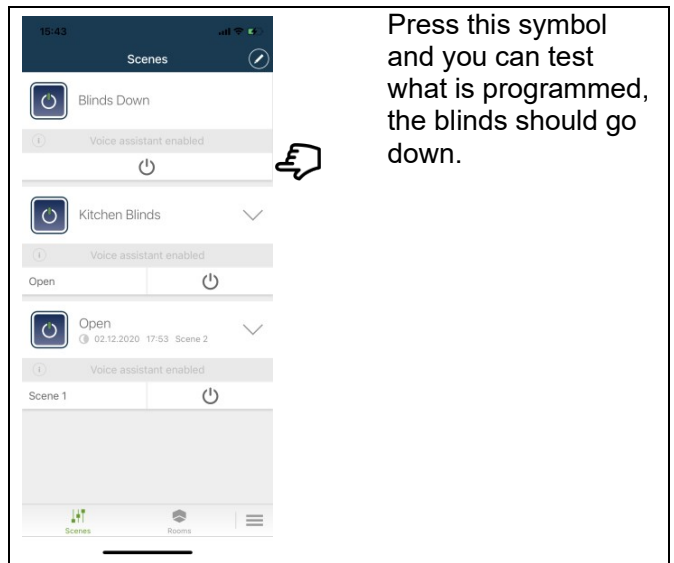
Make sure the "Status" tab is set to "Upper Position".

#### 4.20



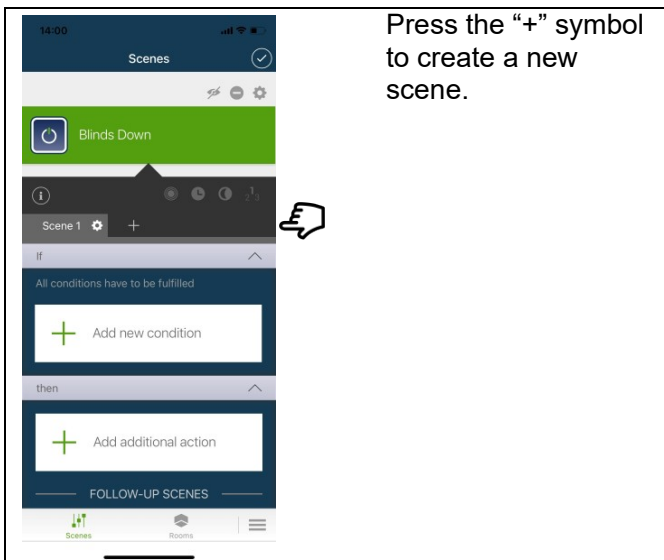
Set "Automatic" to "On".

#### 4.21



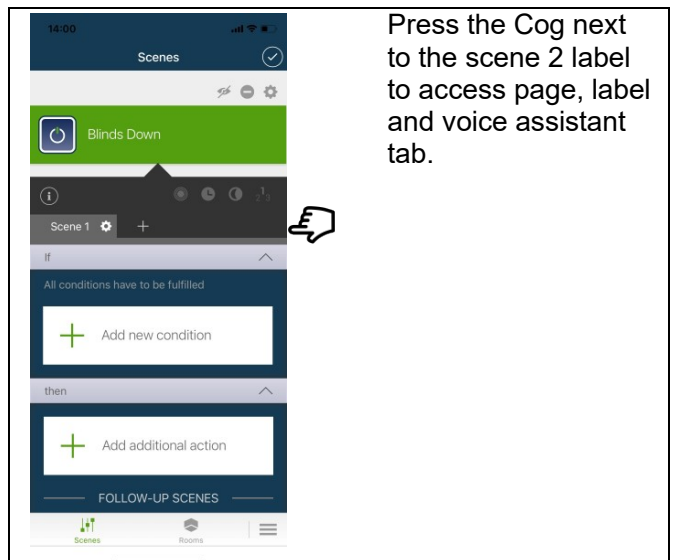
Press this symbol and you can test what is programmed, the blinds should go down.

#### 4.22 Example 2: Blinds Up



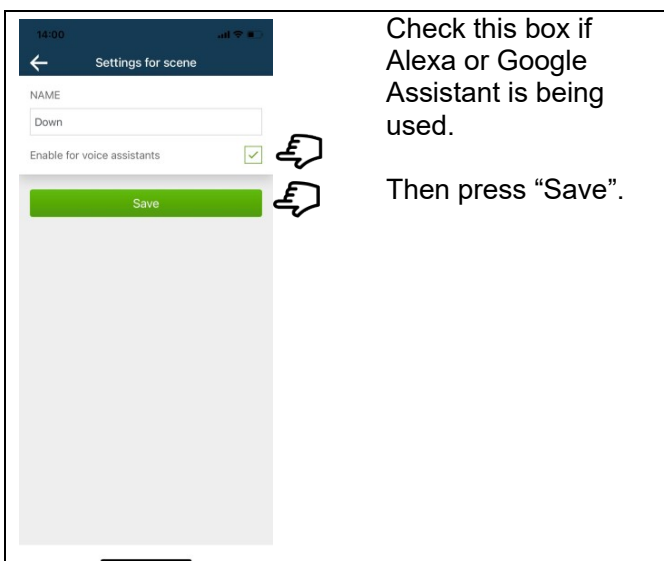
Press the "+" symbol to create a new scene.

#### 4.23



Press the Cog next to the scene 2 label to access page, label and voice assistant tab.

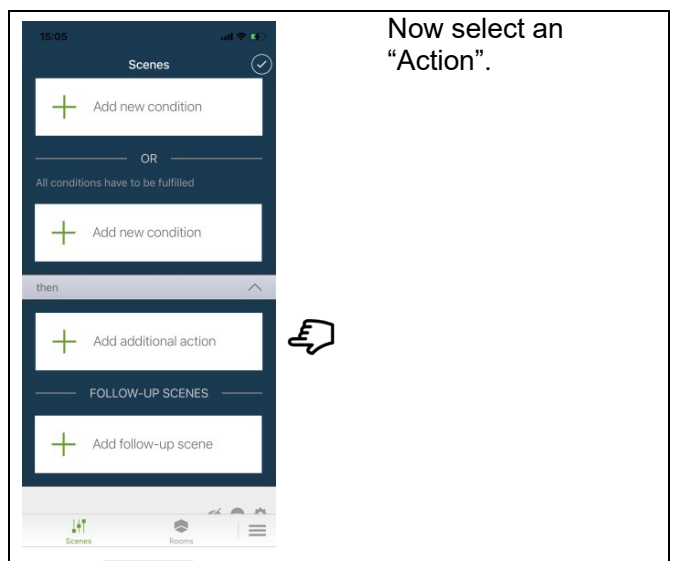
#### 4.24



Check this box if Alexa or Google Assistant is being used.

Then press "Save".

#### 4.25

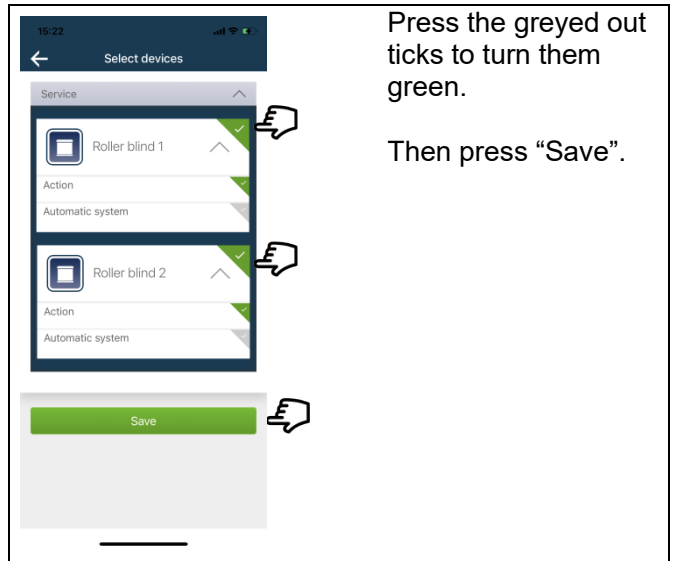


Now select an "Action".

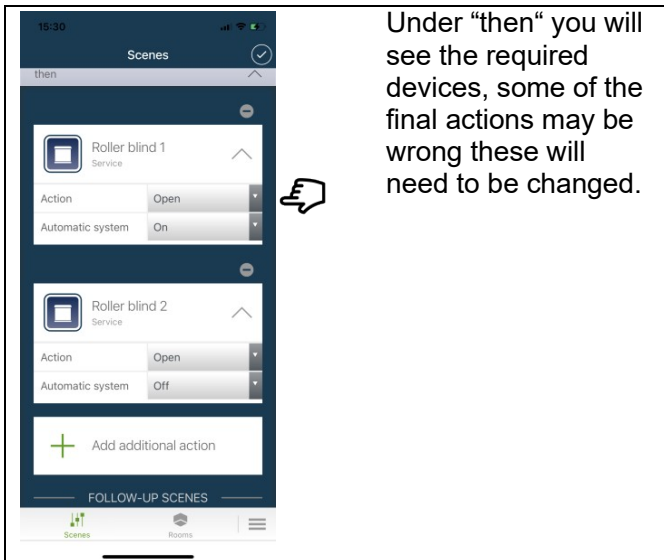
#### 4.26



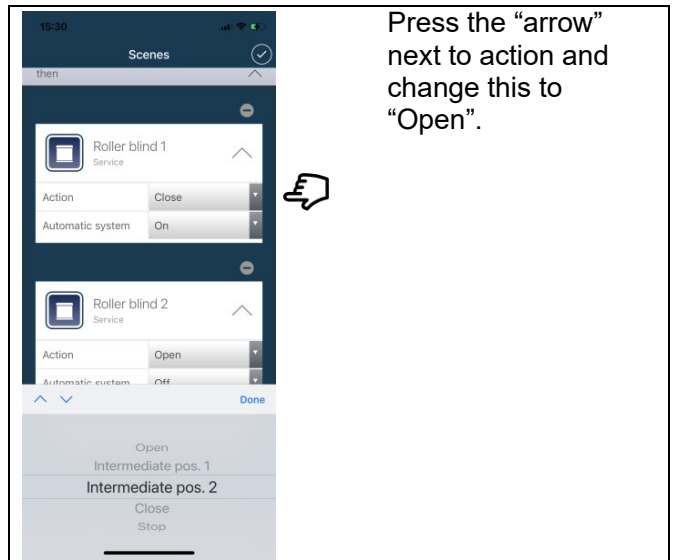
#### 4.27



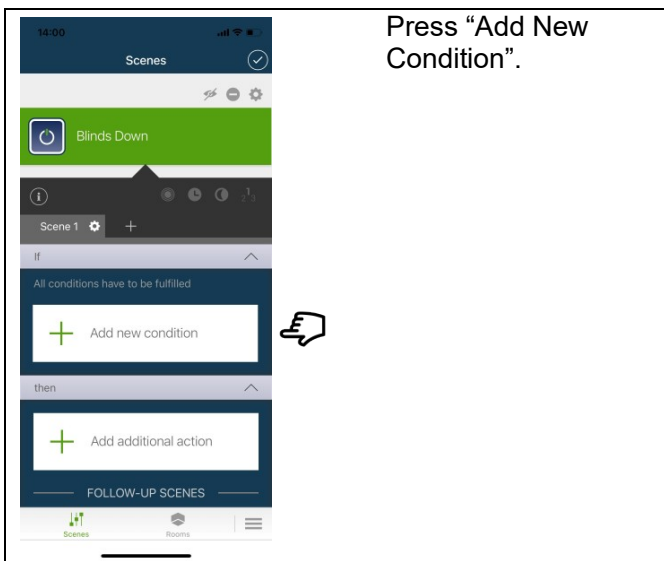
#### 4.28



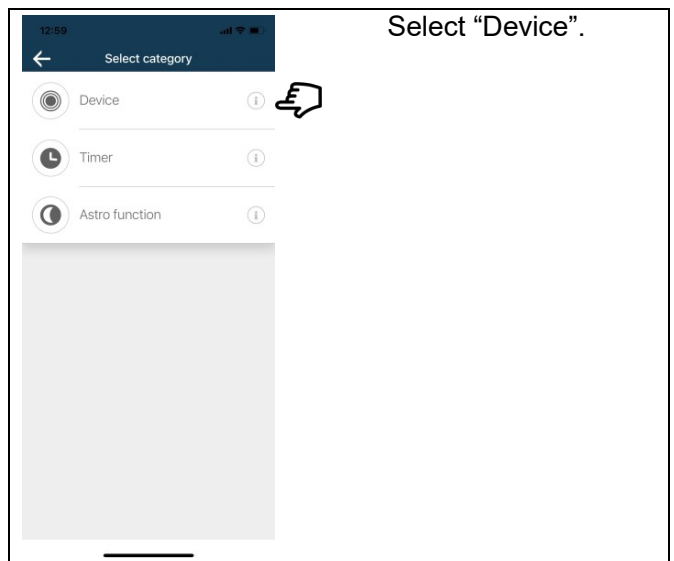
#### 4.29



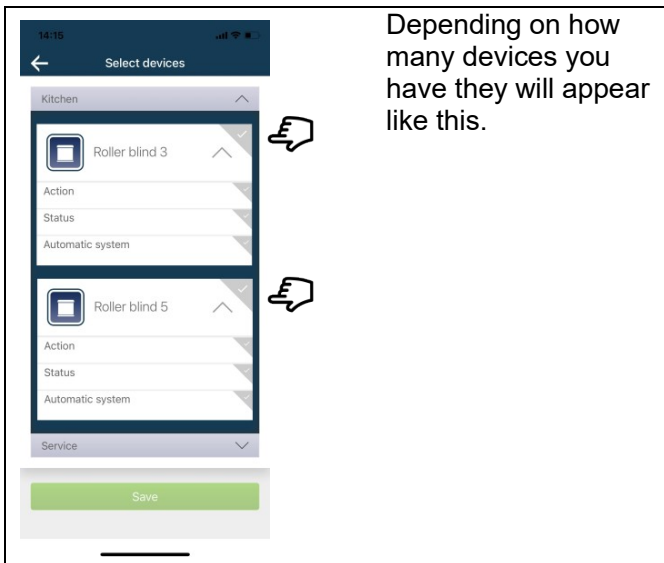
#### 4.30



#### 4.31

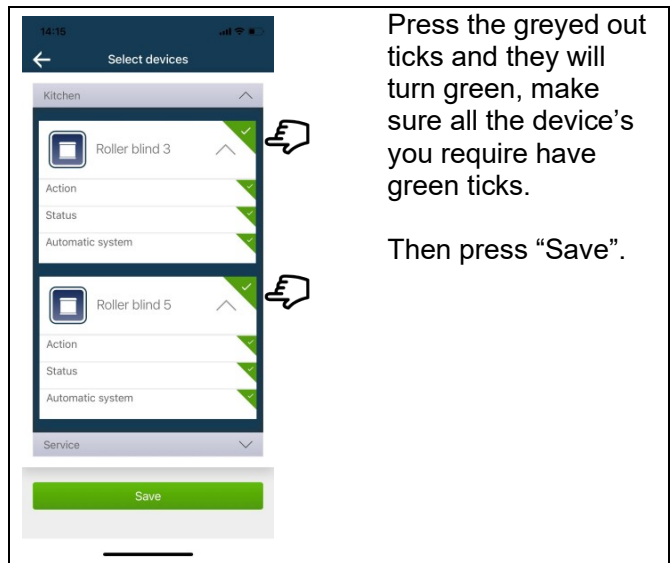


### 4.32



Depending on how many devices you have they will appear like this.

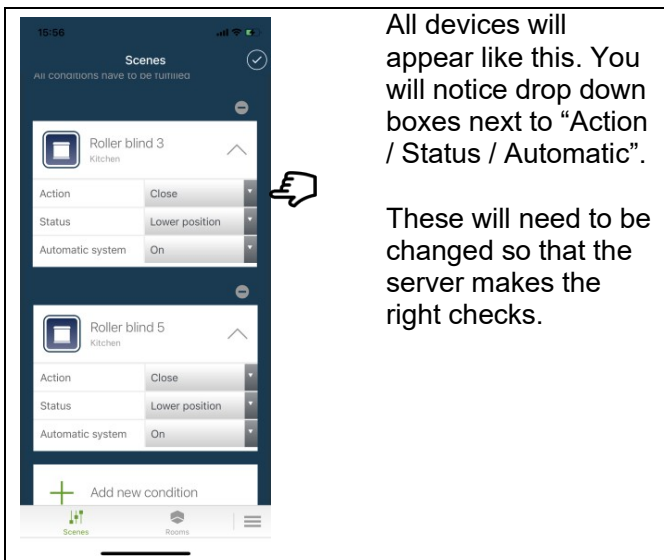
### 4.33



Press the greyed out ticks and they will turn green, make sure all the device's you require have green ticks.

Then press "Save".

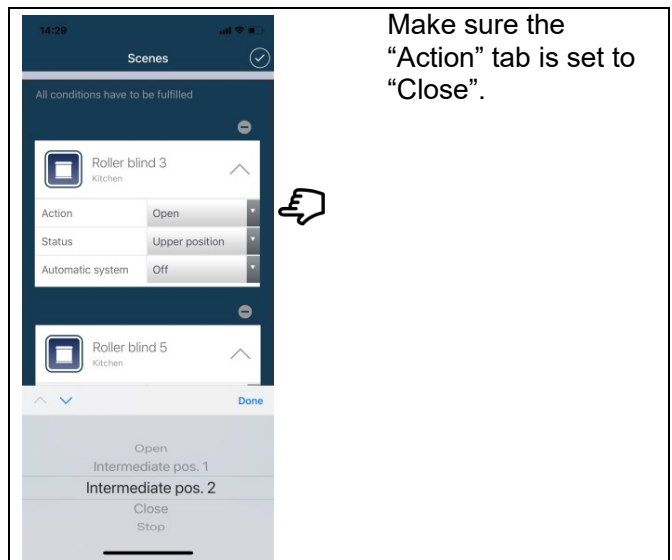
### 4.34



All devices will appear like this. You will notice drop down boxes next to "Action / Status / Automatic".

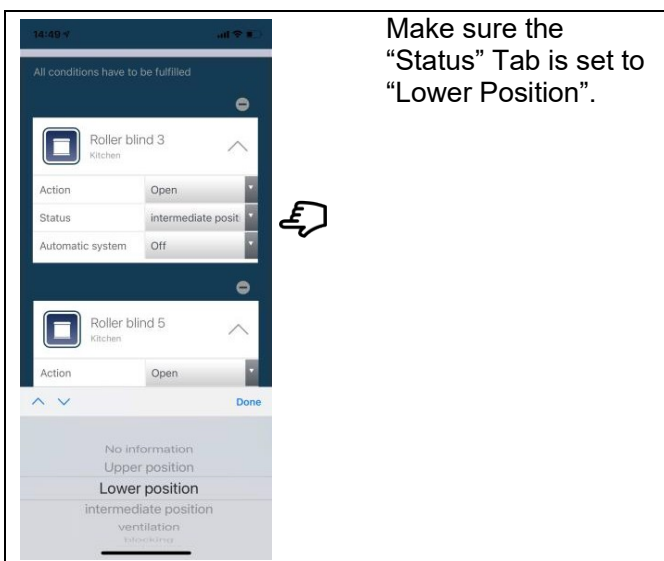
These will need to be changed so that the server makes the right checks.

### 4.35



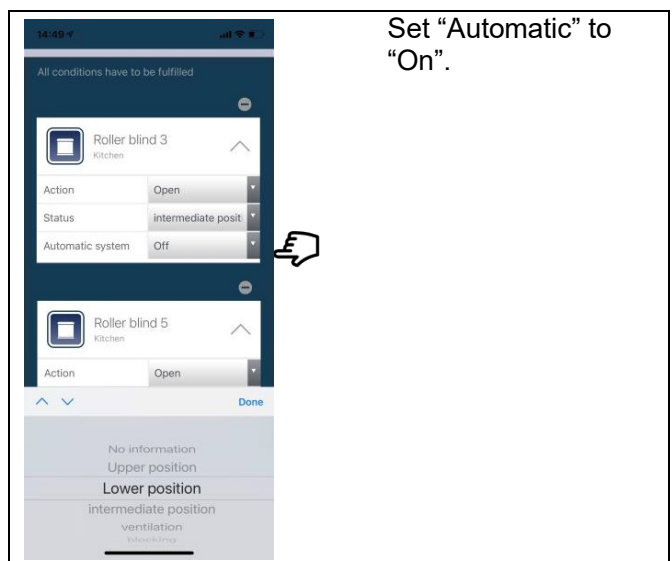
Make sure the "Action" tab is set to "Close".

### 4.36



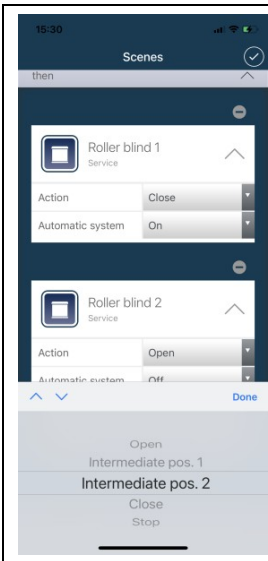
Make sure the "Status" Tab is set to "Lower Position".

### 4.37



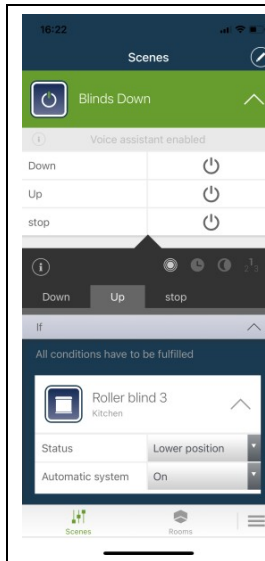
Set "Automatic" to "On".

#### 4.38



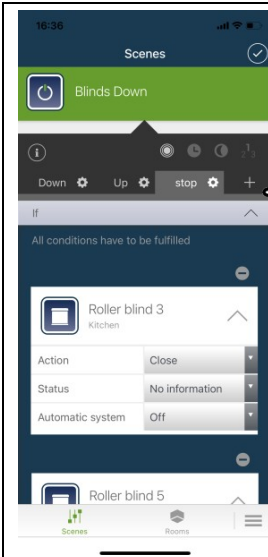
Press the Tick to save what you have done.

#### 4.39



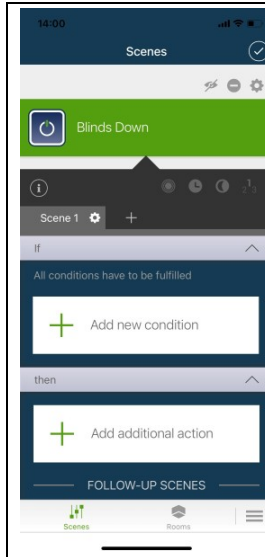
You can now test the commands that have been programmed.

#### 4.40 Example 3: Blinds Stop



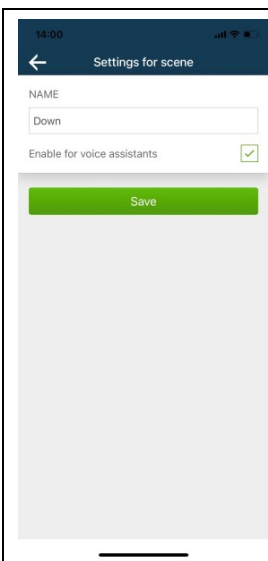
Press the "+" symbol to create a new scene.

#### 4.41



Press the Cog next to the scene 3 label to access page, label and voice assistant tab.

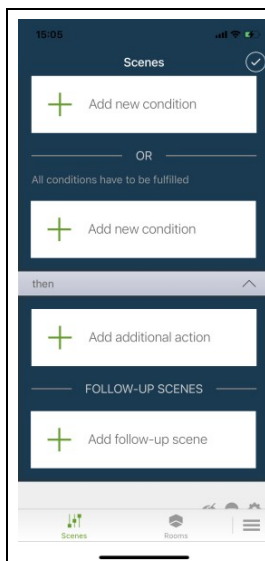
#### 4.42



Check this box if Alexa or Google Assistant is being used.

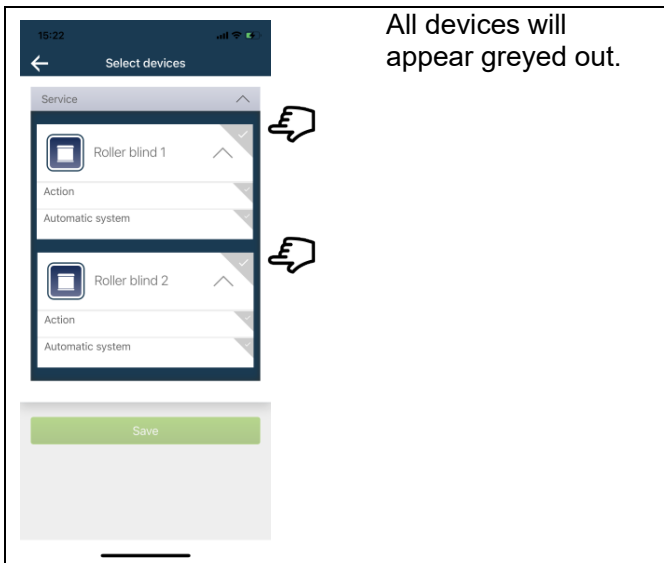
Then press "Save".

#### 4.43

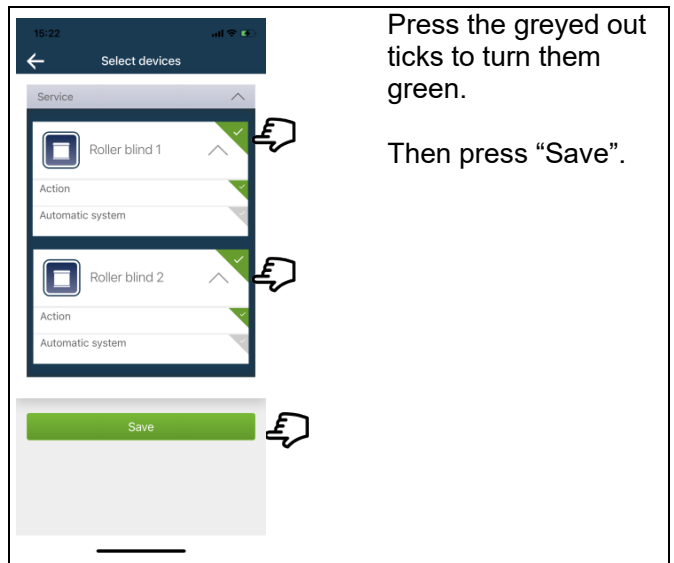


Now select an "Action".

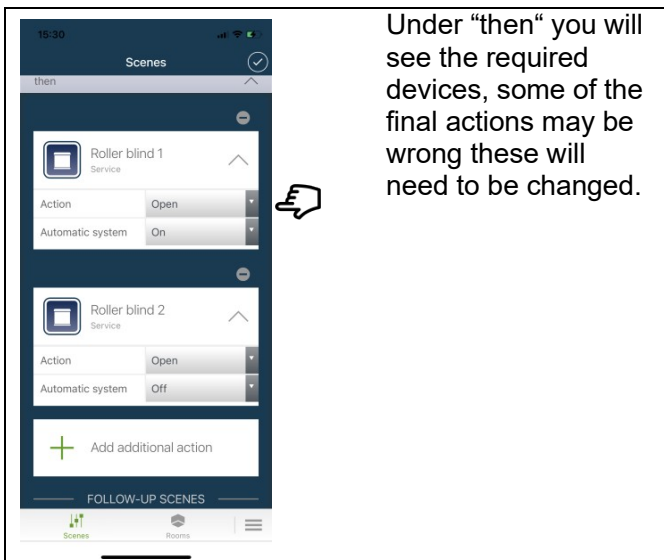
#### 4.44



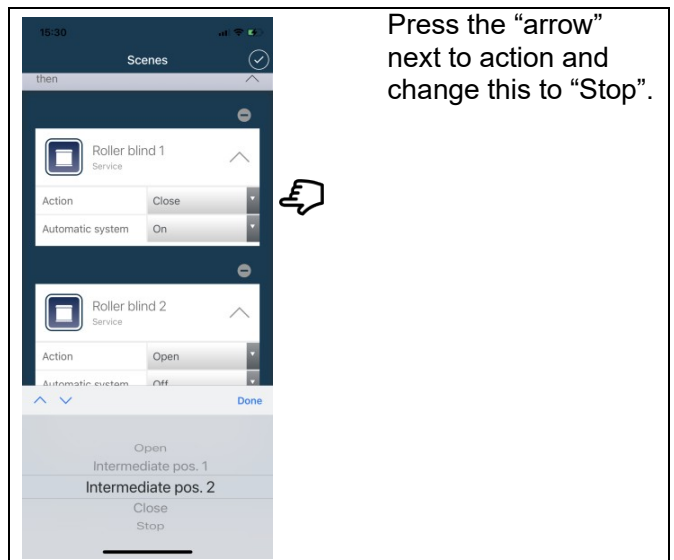
#### 4.45



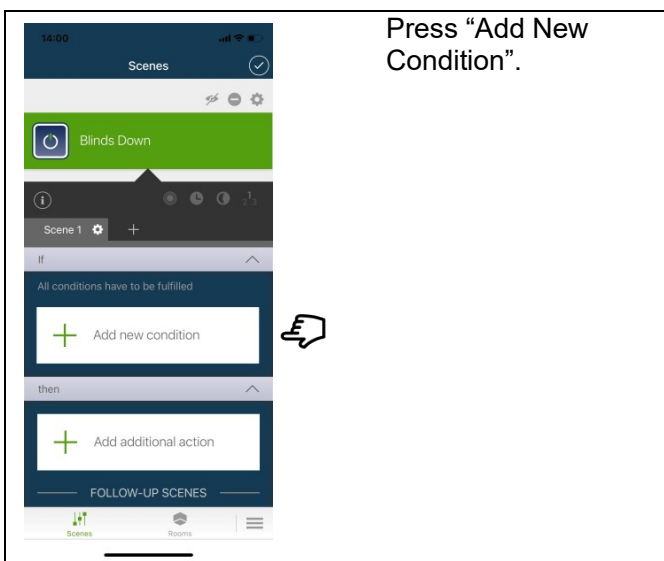
#### 4.46



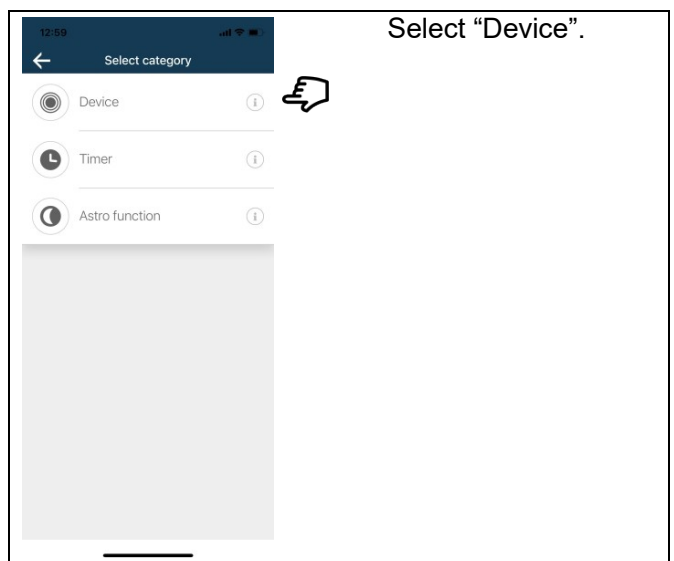
#### 4.47



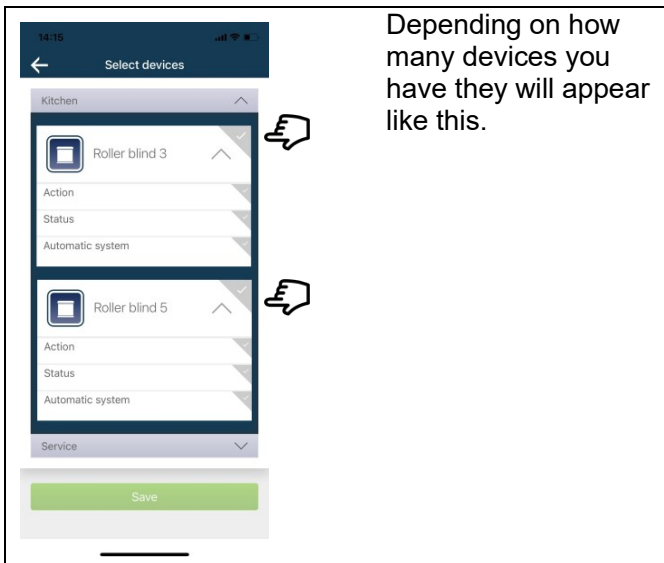
#### 4.48



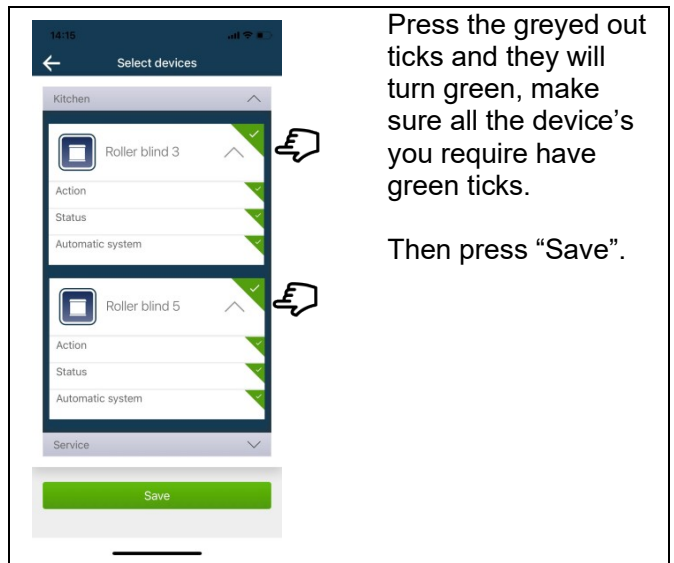
#### 4.49



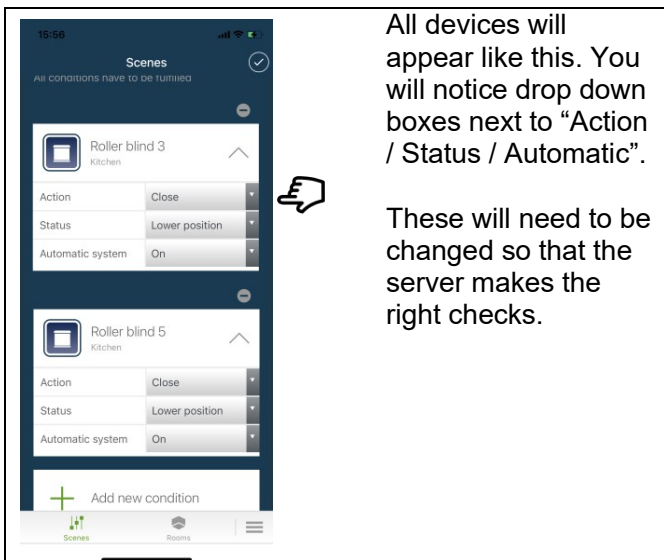
#### 4.50



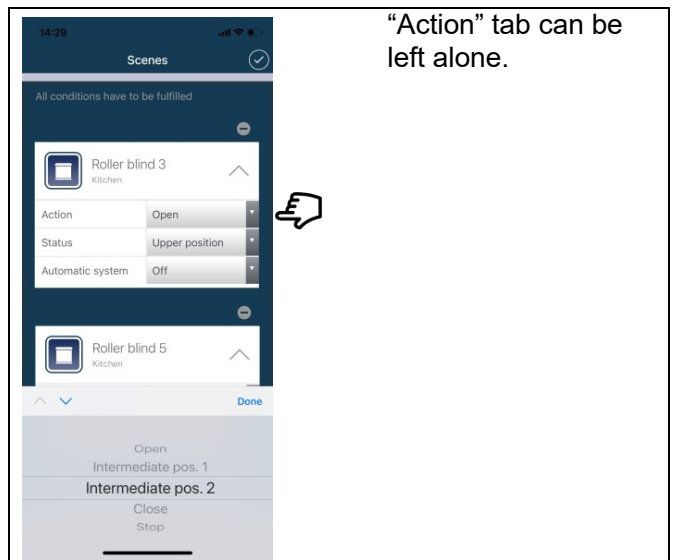
#### 4.51



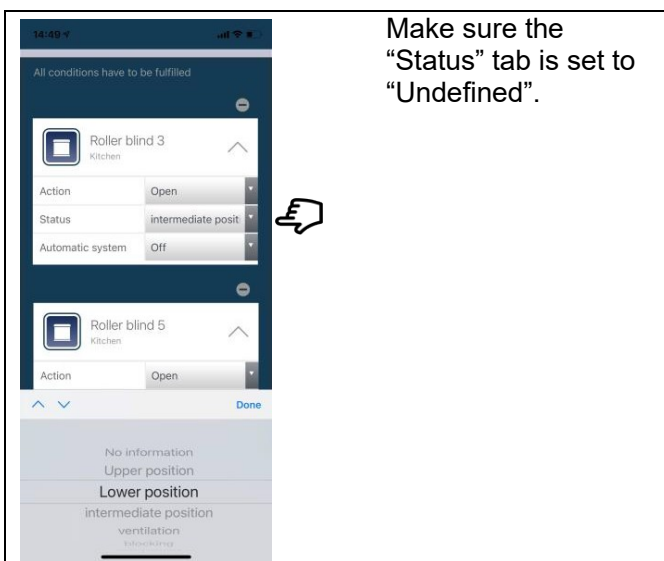
#### 4.52



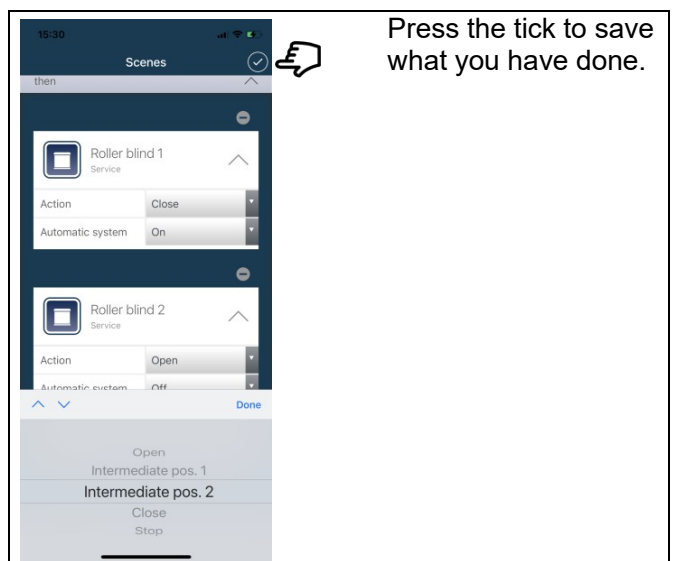
#### 4.53



#### 4.54

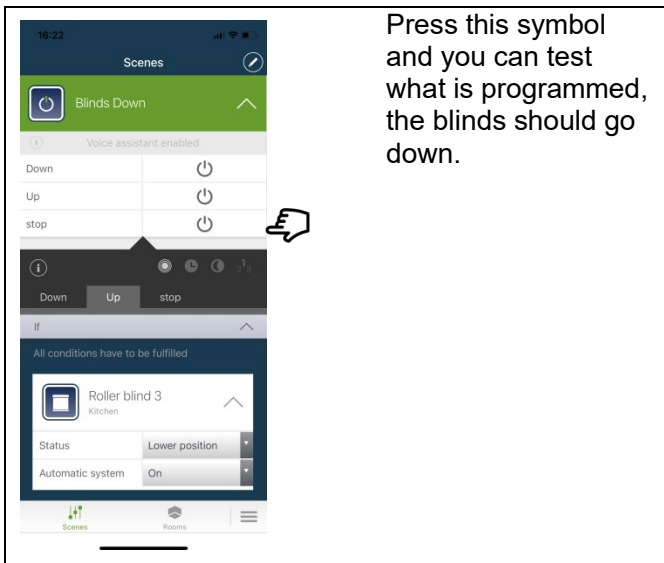


#### 4.55



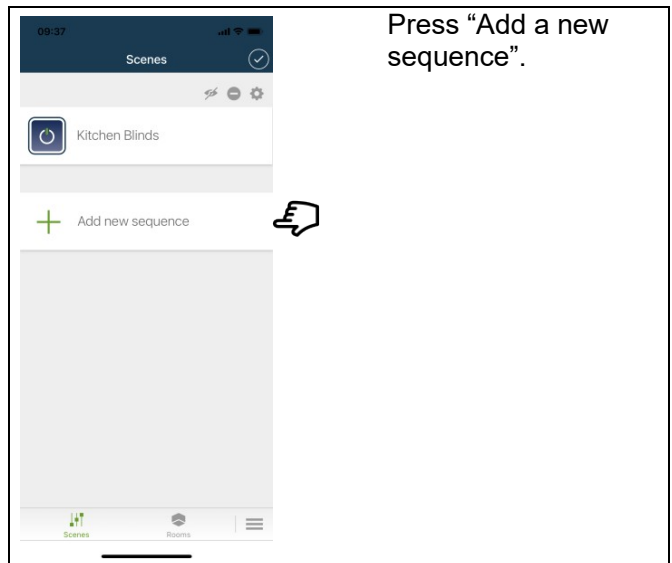


#### 4.56



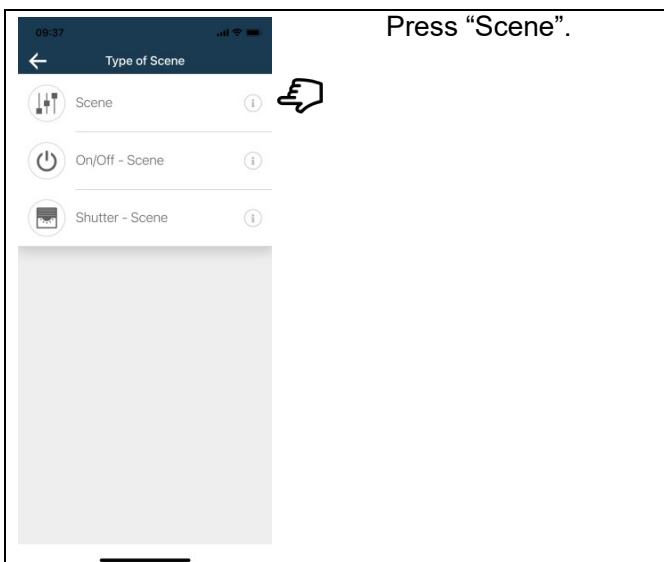
Press this symbol and you can test what is programmed, the blinds should go down.

#### 4.57 Example 4: Timer Programming



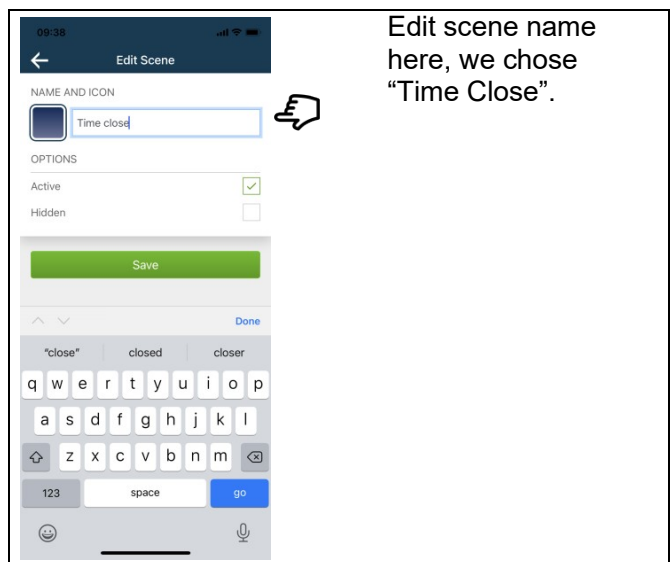
Press "Add a new sequence".

#### 4.58



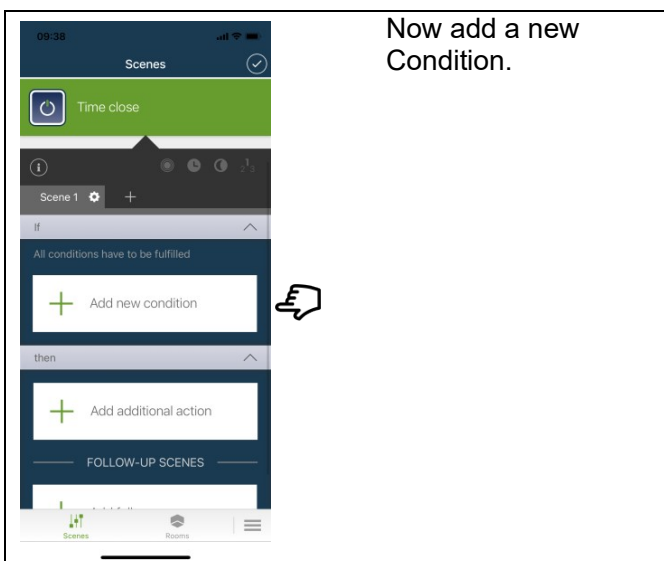
Press "Scene".

#### 4.59



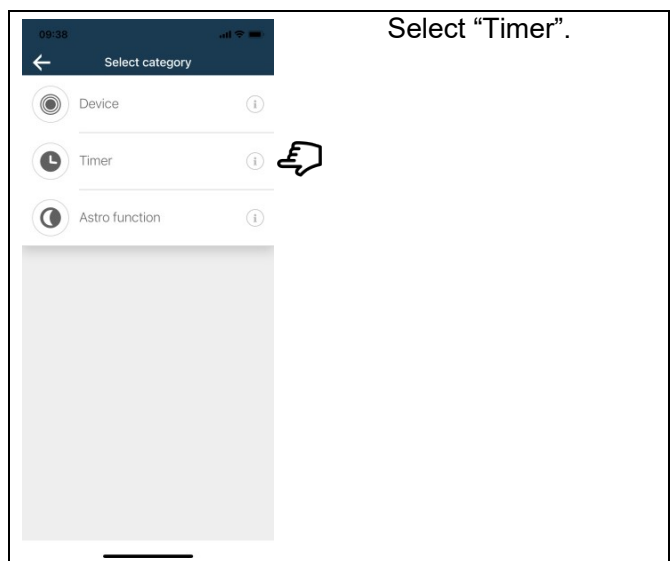
Edit scene name here, we chose "Time Close".

#### 4.60



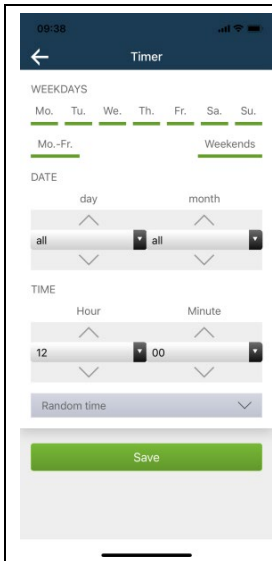
Now add a new Condition.

#### 4.61



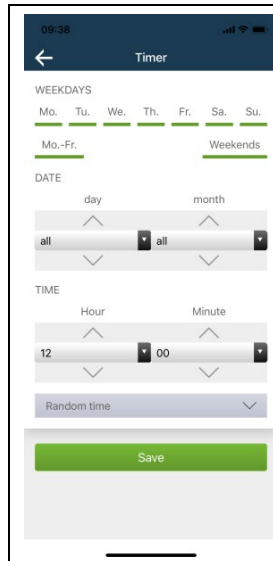
Select "Timer".

#### 4.62



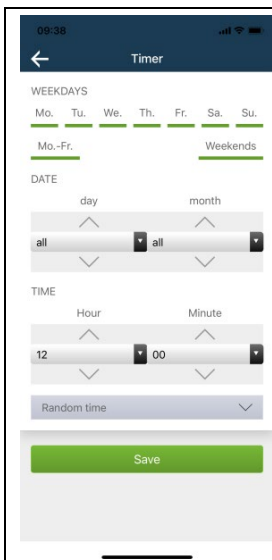
Check or uncheck the days of the week you wish the timer to be active on this scene.

#### 4.63



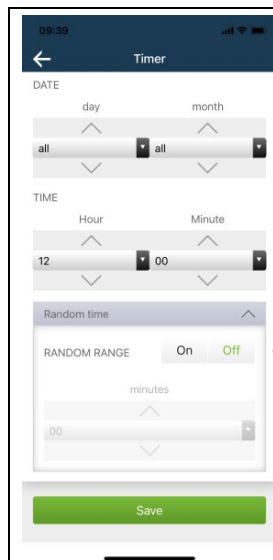
Calendar days and months can be selected for operation, or you can leave it as ALL days ALL Months.

#### 4.64



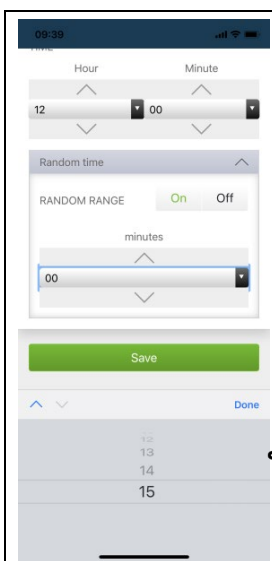
Select the time you wish the action to take place.

#### 4.65



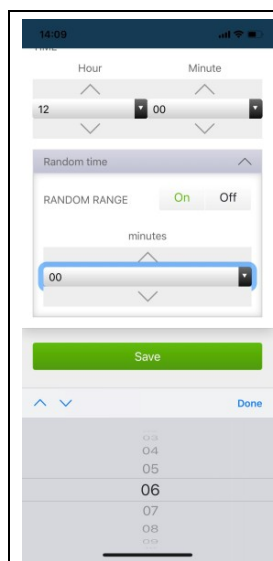
Time for Action can be randomised, this feature can be left off or turned on by press here.

#### 4.66



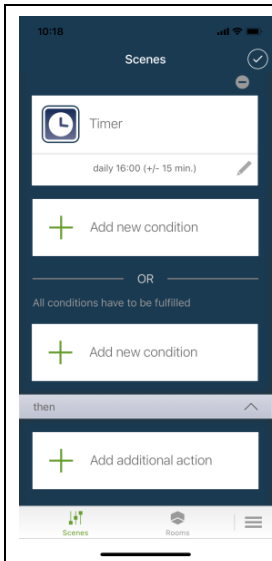
If you turn "RANDOM RANGE" on then a sub window will appear, you can select up to 15 mins of random action.

#### 4.67



Once all settings have been placed remember to press "Save".

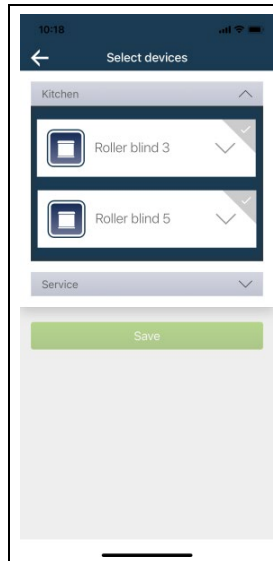
#### 4.68



The top window will now show what time the system will make an action.

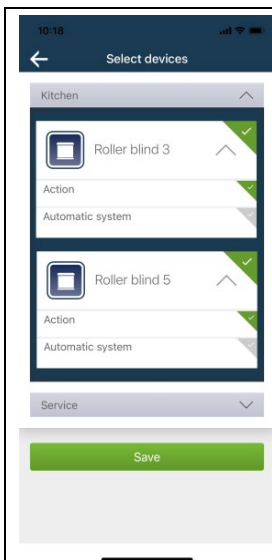
Now select an action to choose what device is required.

#### 4.69



All devices will appear greyed out.

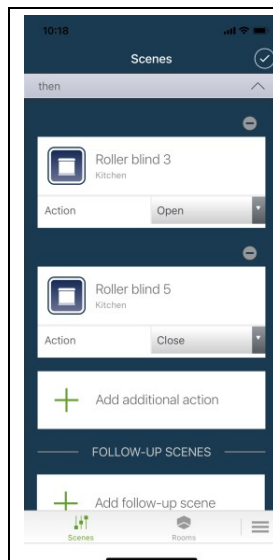
#### 4.70



Press the greyed out ticks to turn them green.

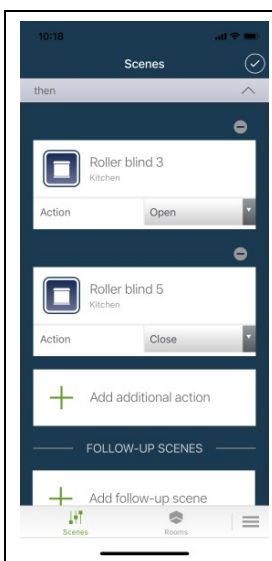
Then press "Save".

#### 4.71



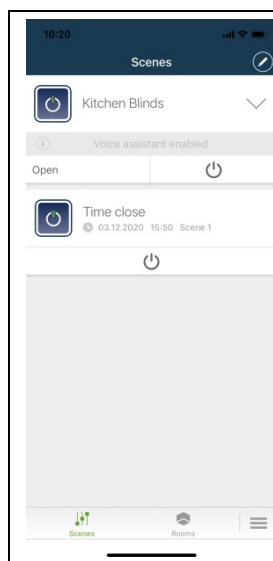
The Action TAB needs to be set for what you want the device to do, in this case we need "Close".

#### 4.72



Press the tick to save what you have programmed.

#### 4.73



Once the Tick is pressed, you will see that under scenes it is set up. At 4 pm +/- 15 min the blinds will close.

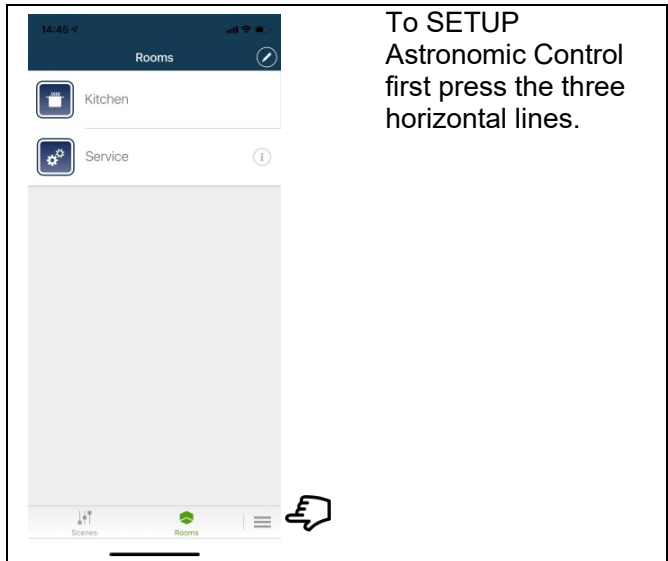
Press the power button here to confirm that the blinds move.

#### 4.74

To set a timer event for open, repeat steps 4.52 to 4.67. Making sure that you check the Action to be OPEN!

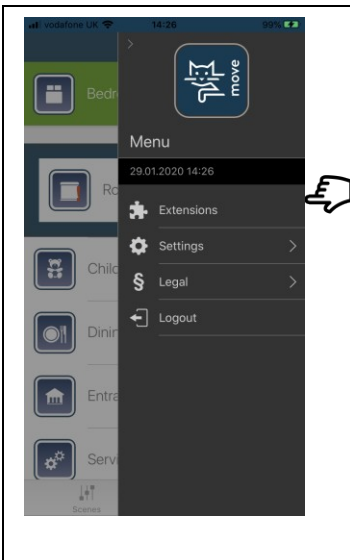
#### 4.75 Example 5: Astronomic Programming

To SETUP Astronomic Control first press the three horizontal lines.



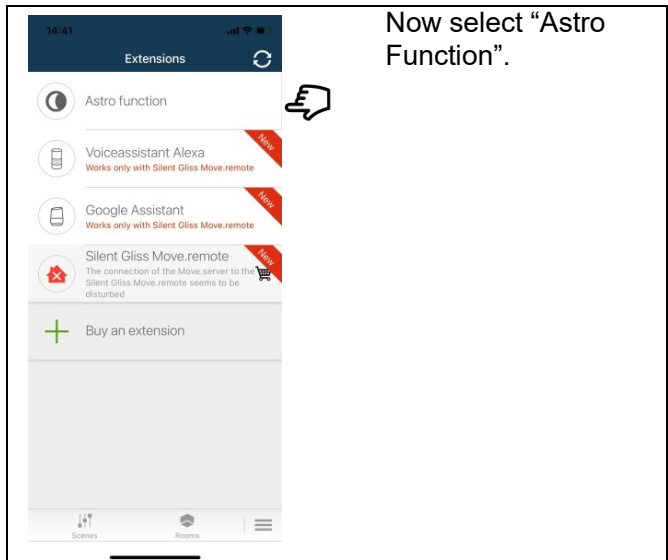
#### 4.76

Press the "Extensions" tab.



#### 4.77

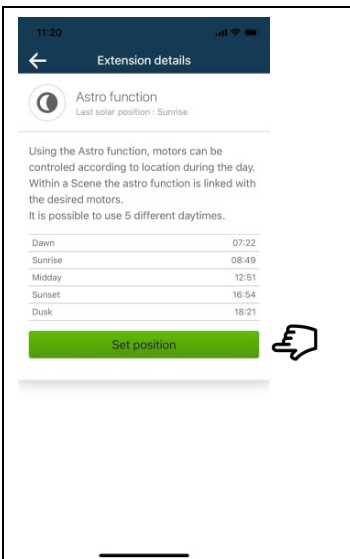
Now select "Astro Function".



#### 4.78

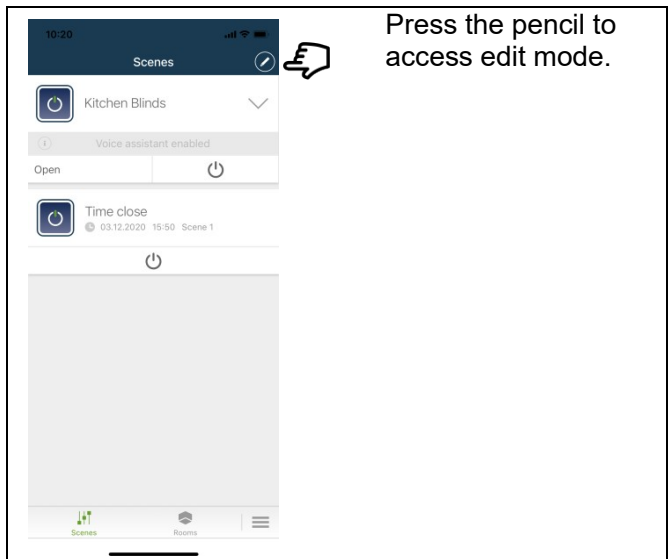
Press "Set Position", you will be prompted to have location accuracy turned on from your device.

Then press ok.

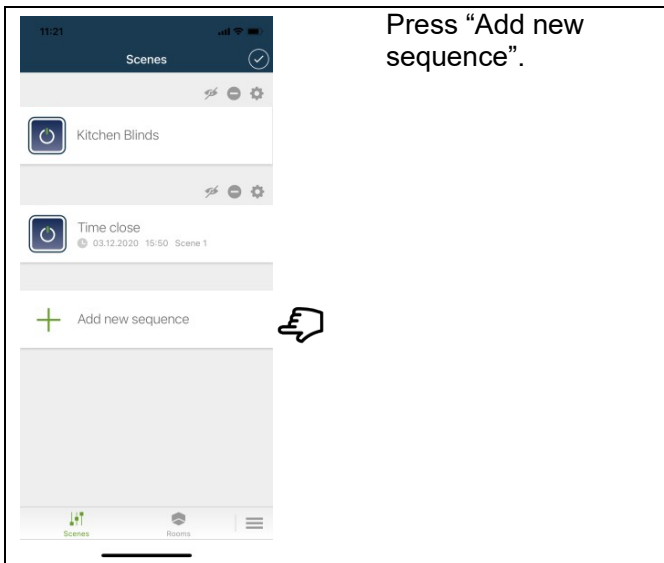


#### 4.79

Press the pencil to access edit mode.

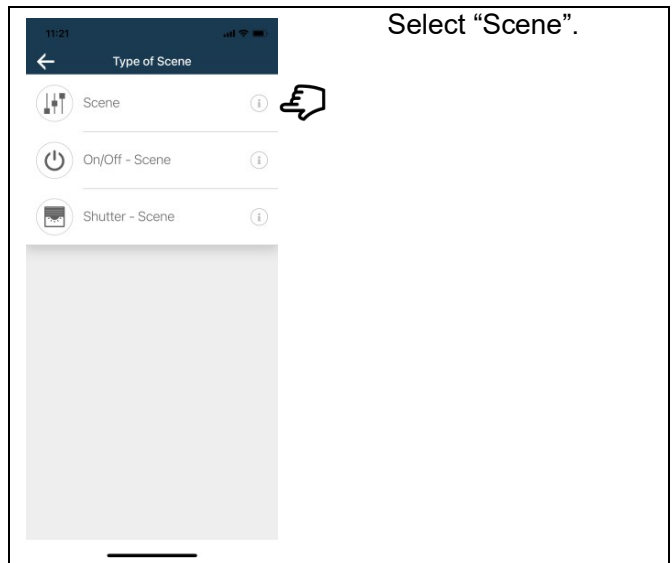


#### 4.80



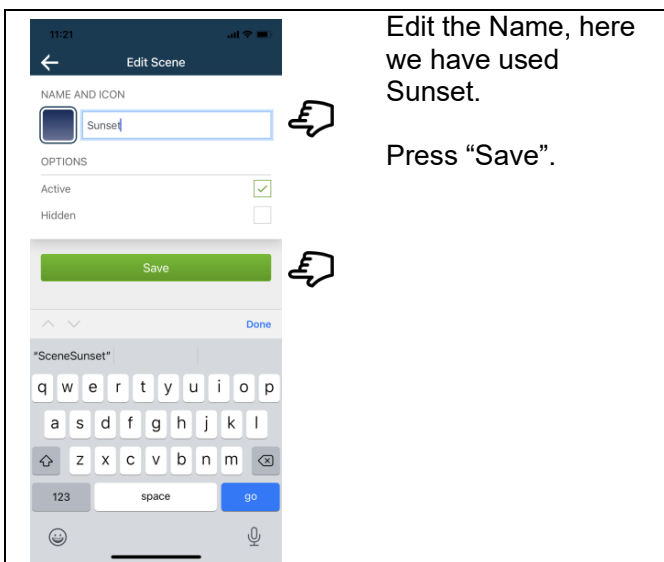
Press "Add new sequence".

#### 4.81



Select "Scene".

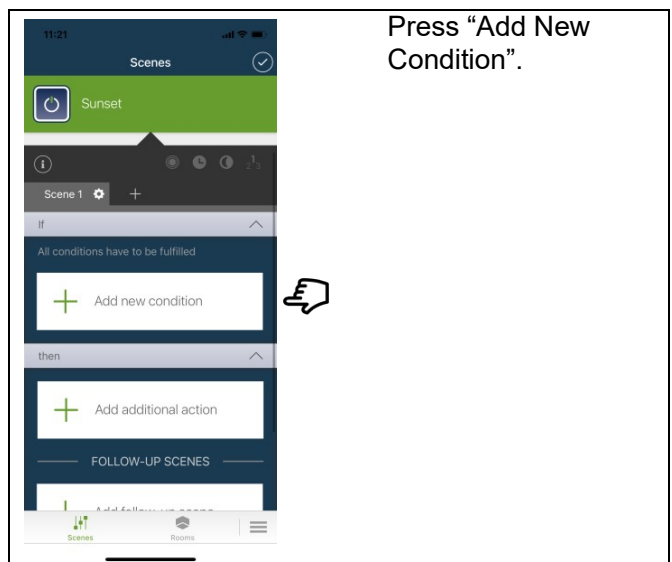
#### 4.82



Edit the Name, here we have used Sunset.

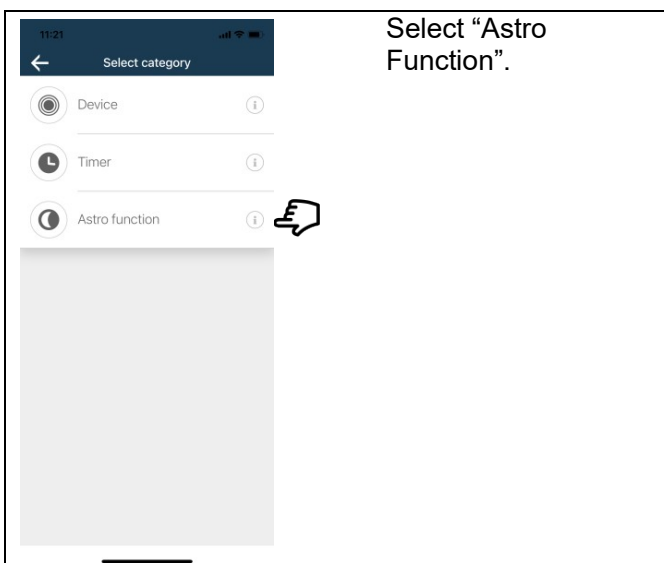
Press "Save".

#### 4.83



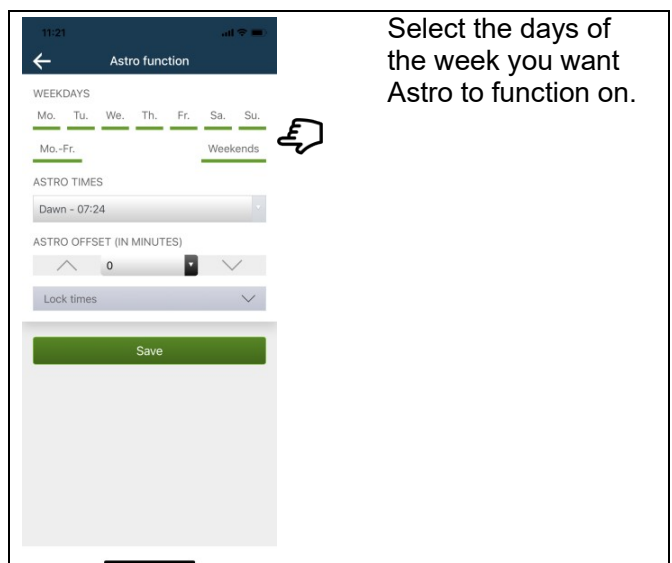
Press "Add New Condition".

#### 4.84



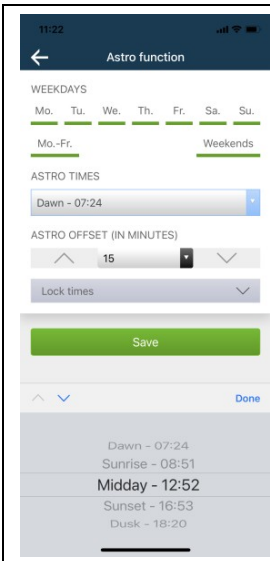
Select "Astro Function".

#### 4.85



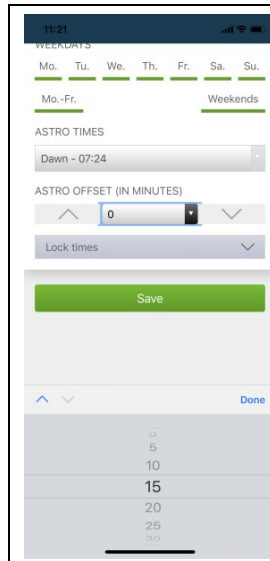
Select the days of the week you want Astro to function on.

### 4.86



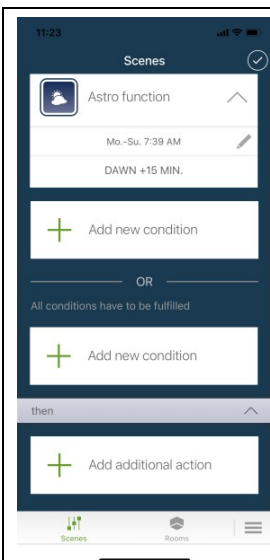
Select what part of the day you want the server to start with.

### 4.87



Astronomic settings can be randomised by + or - 15 mins, for this we will set it to be +15 mins after dawn.

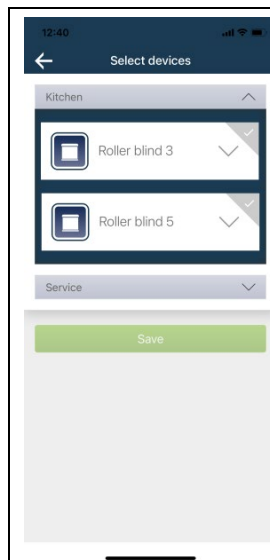
### 4.88



Confirmation of current programming.

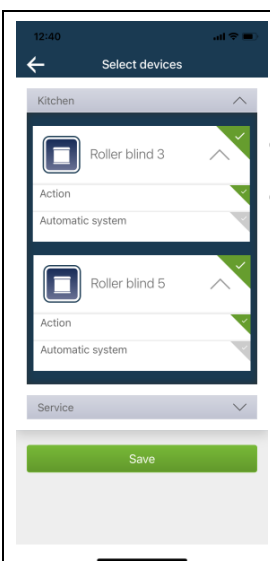
Add a new action of what you want the system to do after dawn.

### 4.89



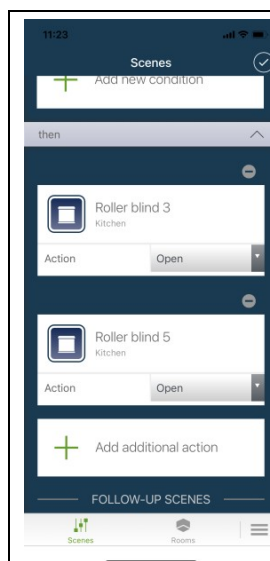
Devices will appear greyed out.

### 4.90



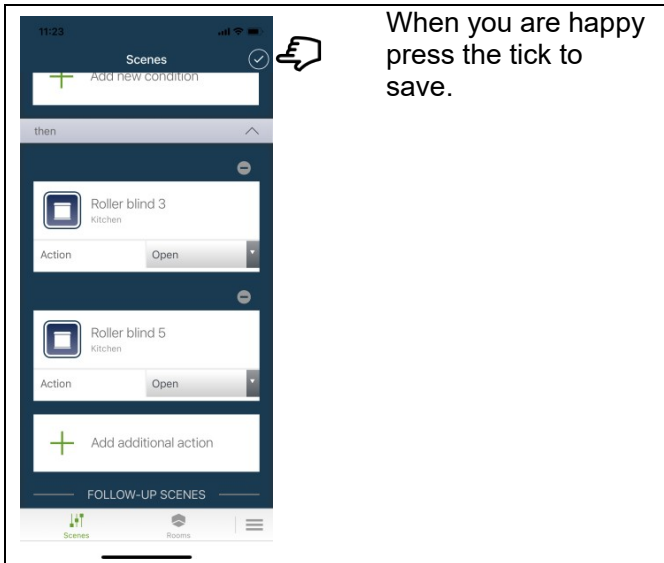
Press the tick to highlight green.

### 4.91



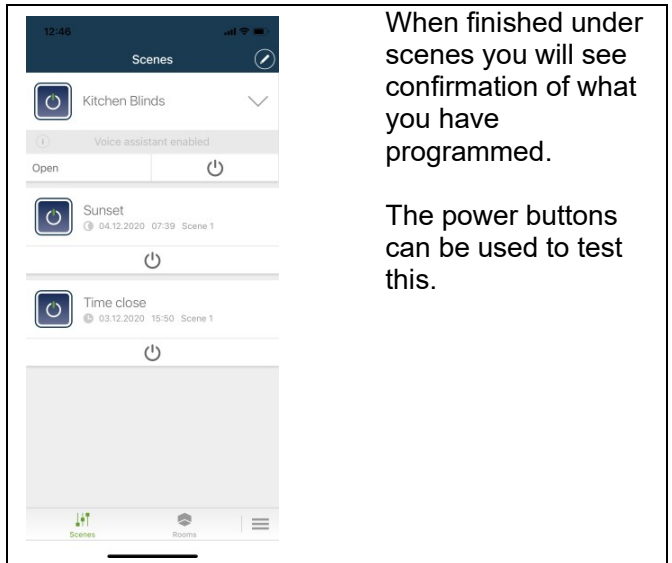
The "Action" here needs to be checked to "Open".

#### 4.92



When you are happy press the tick to save.

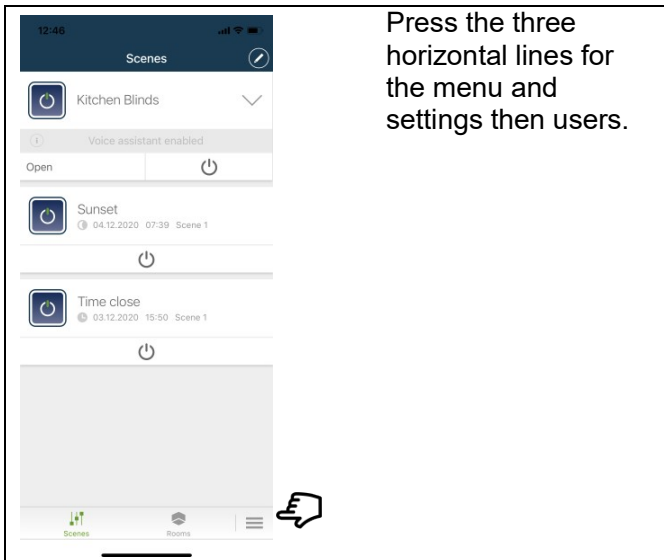
#### 4.93



When finished under scenes you will see confirmation of what you have programmed.

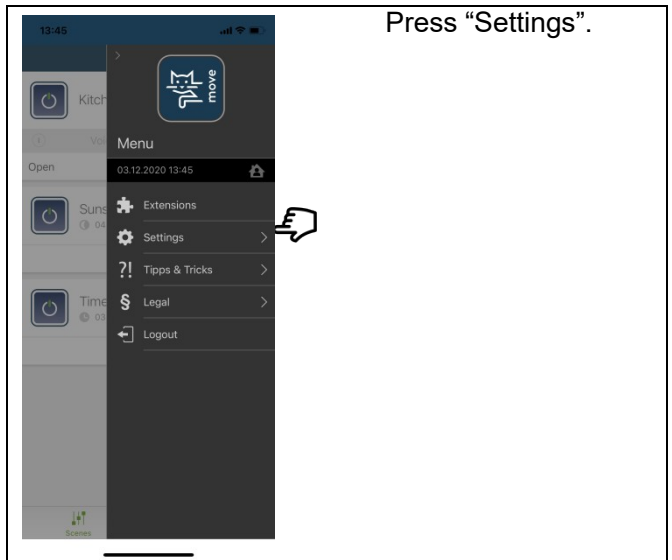
The power buttons can be used to test this.

### 5 Adding additional users



Press the three horizontal lines for the menu and settings then users.

#### 5.1



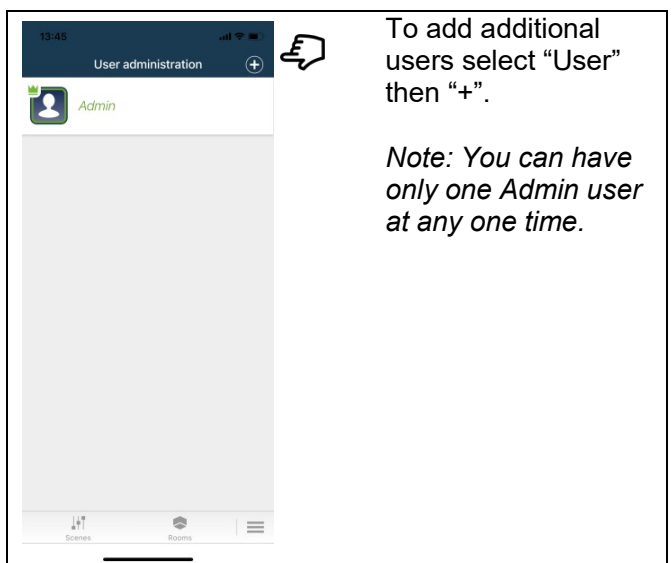
Press "Settings".

#### 5.2



Press "User".

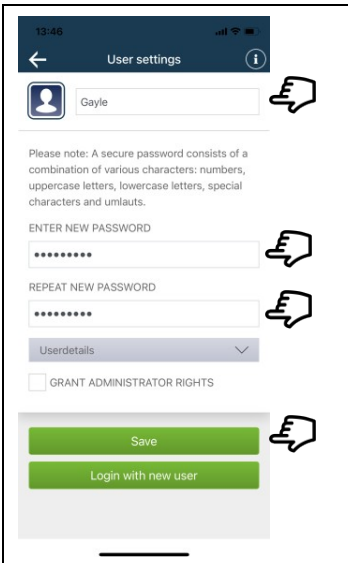
#### 5.3



To add additional users select "User" then "+".

*Note: You can have only one Admin user at any one time.*

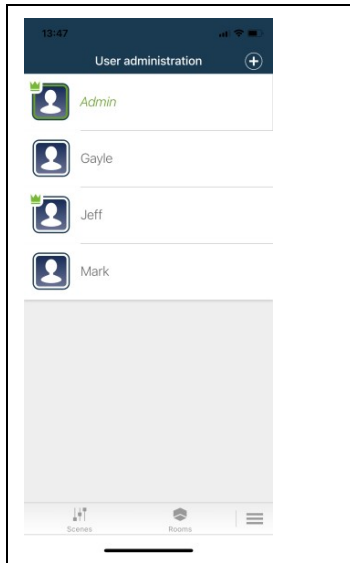
### 5.4



Enter new user name and desired password. Select "Grant Administrator Rights" only if required.

Note - only one Administrator can be active at any one time - system will log Admin users out as soon as another logs on.

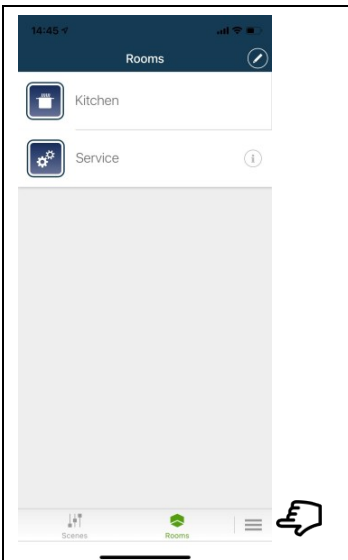
### 5.5



Confirmation of Users.

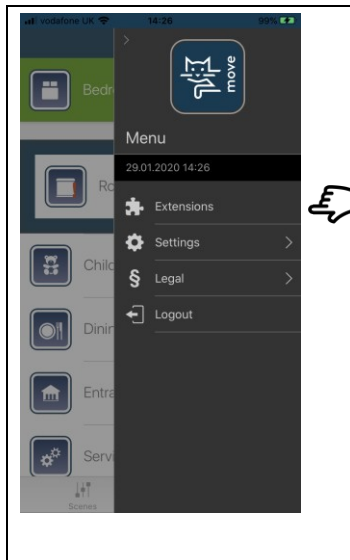
People assigned a crown have administrator rights.

## 6 Remote Access and Voice Control



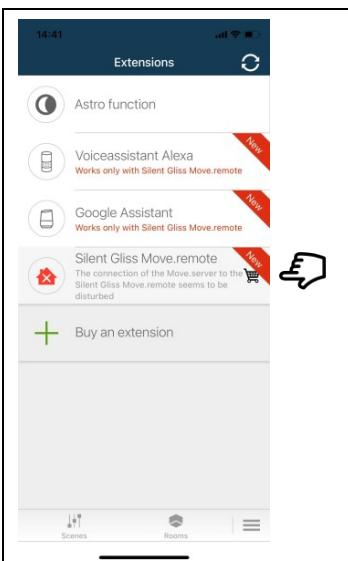
To SETUP Remote Access and Voice Control first press the three horizontal lines.

### 6.1



Press the "Extensions" tab.

### 6.2

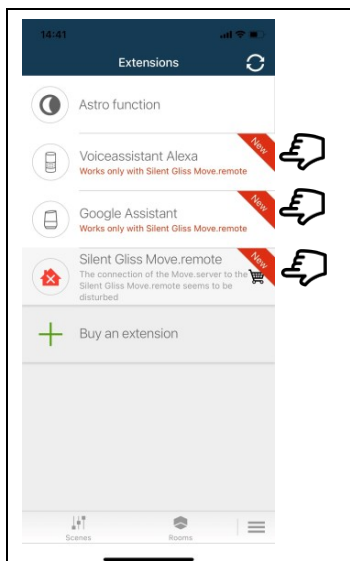


Select "Extensions" to buy control access over the net (control when away from home).

Charge is currently €2 per month on a yearly basis.

*Note that the first 3 months trial are without charge.*

### 6.3

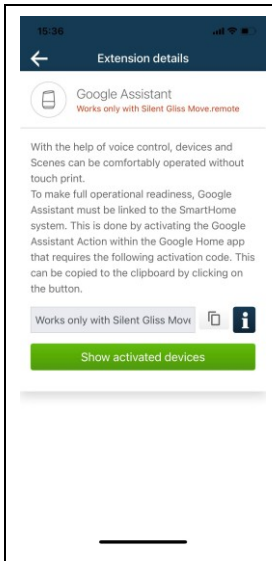


Select either Alexa or Google Assistant.

Move Remote is also required.

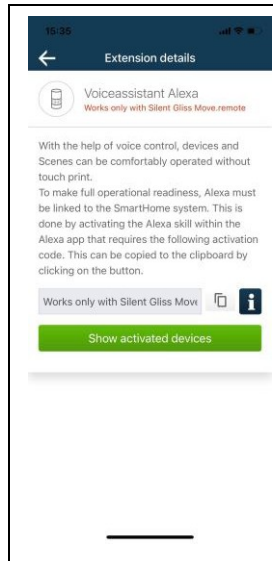


## 6.4



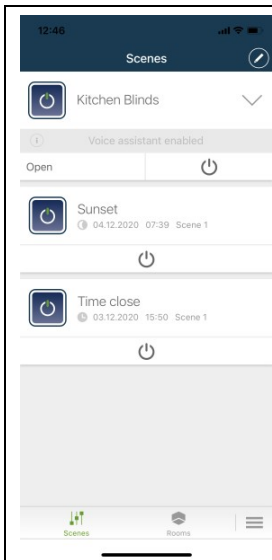
To link Google follow the instructions here and link via the respective App.

## 6.5



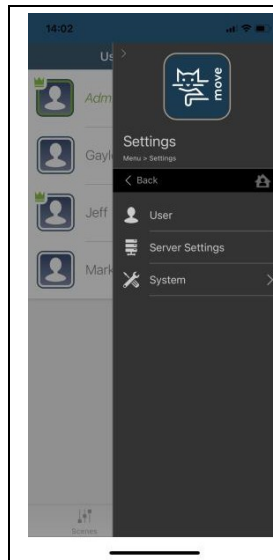
To link Alexa follow the instructions here and link via the respective App.

## 7 System Master Reset



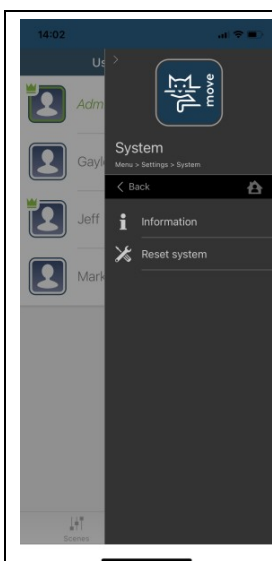
Press the three horizontal lines for the menu and settings then users.

### 7.1



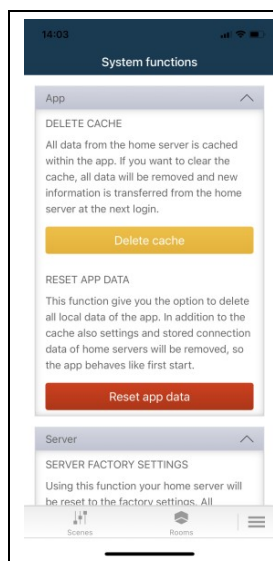
Press the "System" menu.

### 7.2



Press "Reset System" menu.

### 7.3

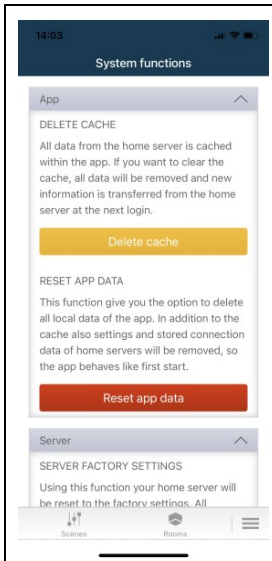


Press "Device cache" to clear the servers' cache.

New information will be transferred on next login.

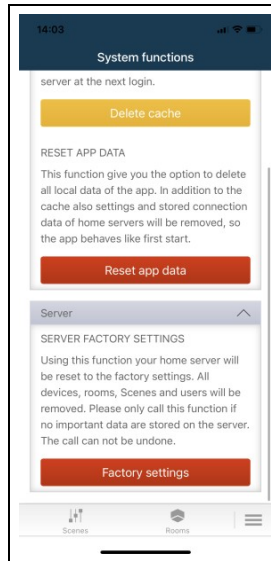
This clears the server of any unwanted data "old phones, etc".

## 7.4



Press “Reset app data” to clear the app data, the app will then behave like first start.

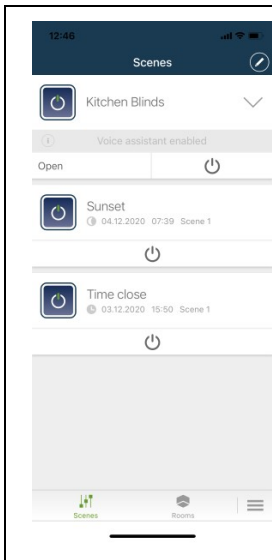
## 7.5



Factory reset will clear all devices, rooms, scenes and users.

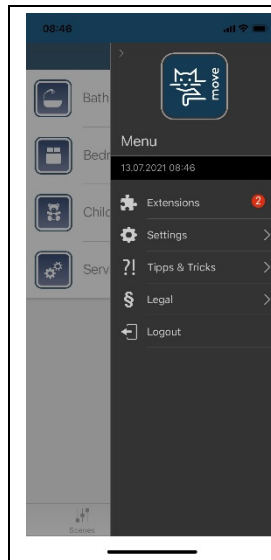
Be certain when selecting this as there is no going back.

## 8 System Backup



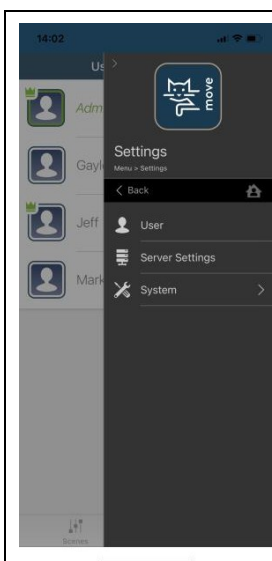
Press the three horizontal lines for the menu and settings.

## 8.1



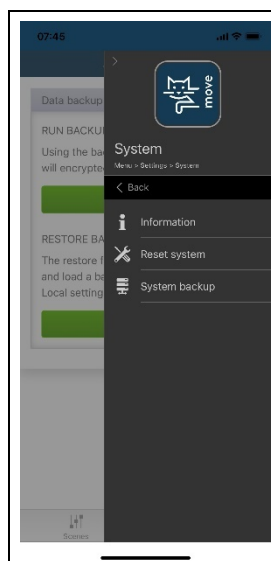
Press Settings.

## 8.2



Press “Reset app data” to clear the app data, the app will then behave like first start.

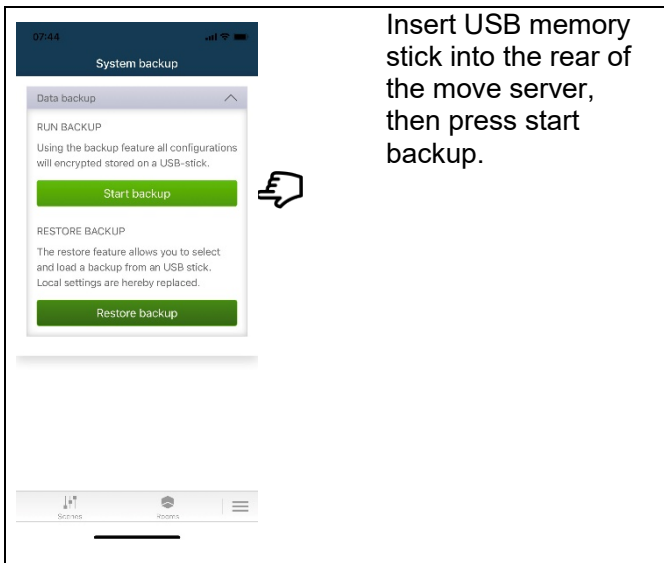
## 8.3



Factory reset will clear all devices, rooms, scenes and users.

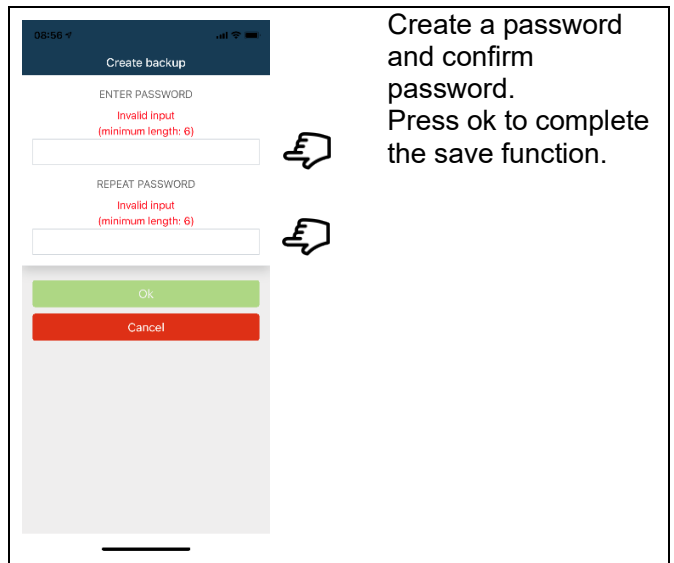
Be certain when selecting this as there is no going back.

### 8.4



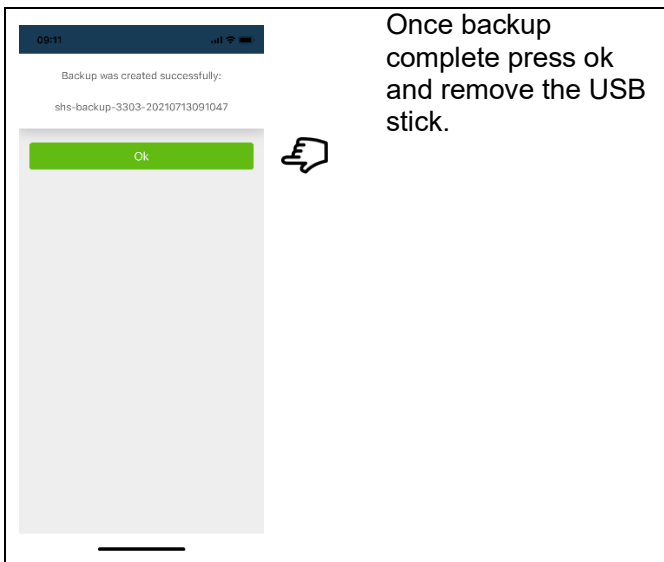
Insert USB memory stick into the rear of the move server, then press start backup.

### 8.5



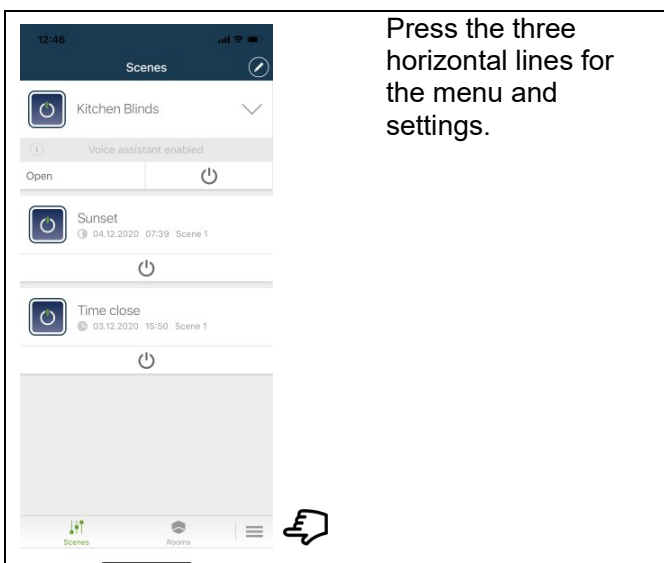
Create a password and confirm password. Press ok to complete the save function.

### 8.6



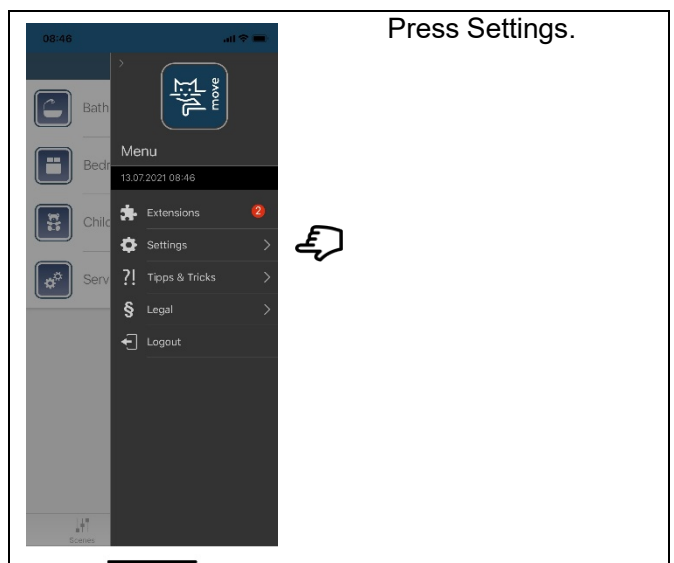
Once backup complete press ok and remove the USB stick.

## 9 System Restore



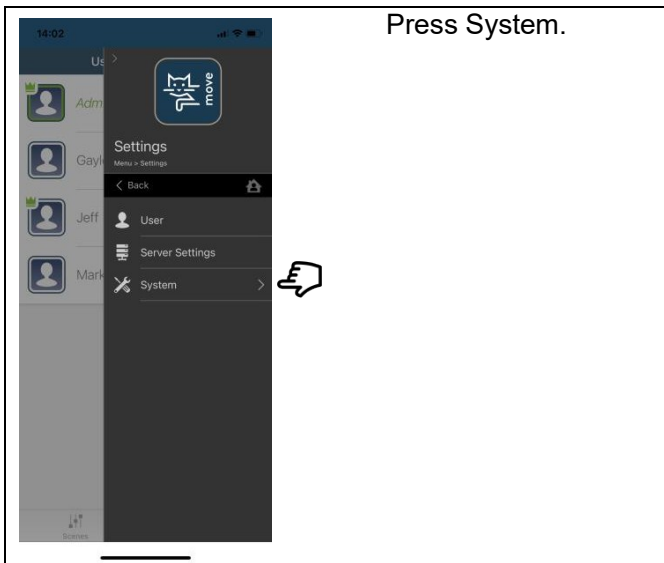
Press the three horizontal lines for the menu and settings.

### 9.1

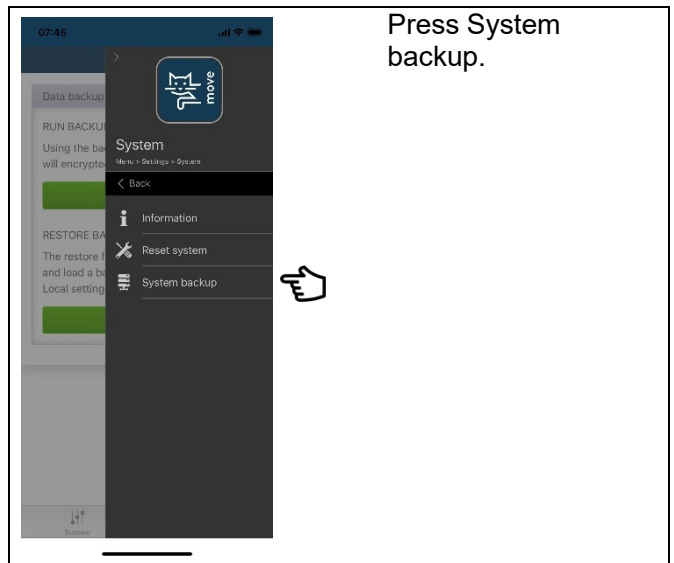


Press Settings.

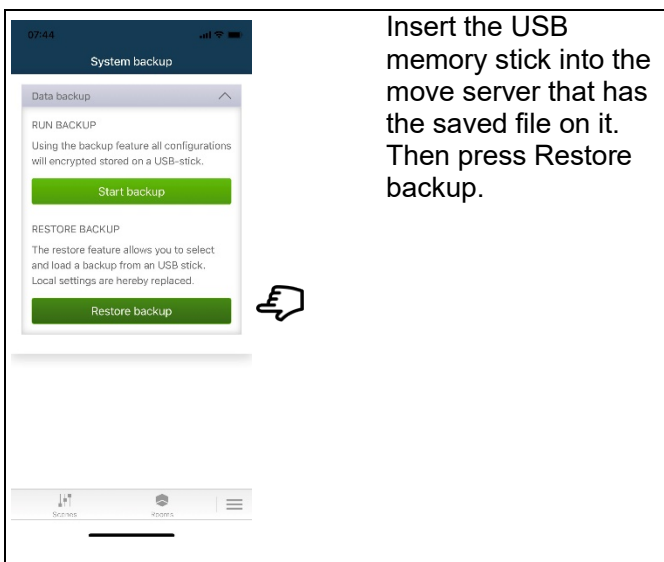
### 9.2



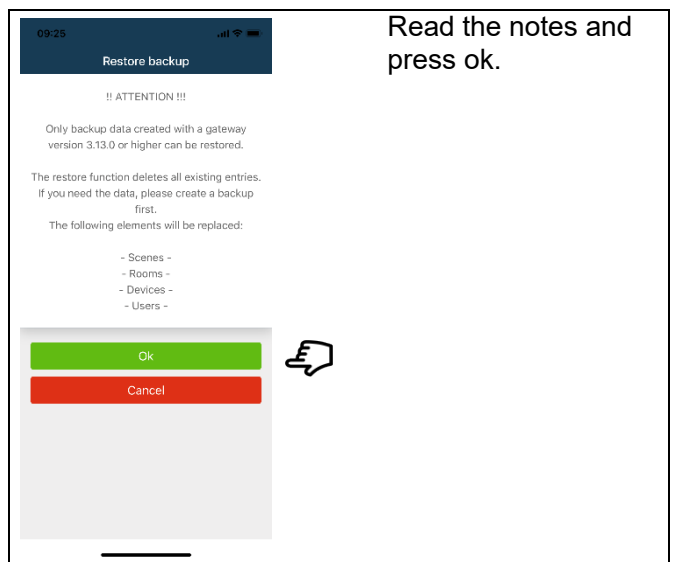
### 9.3



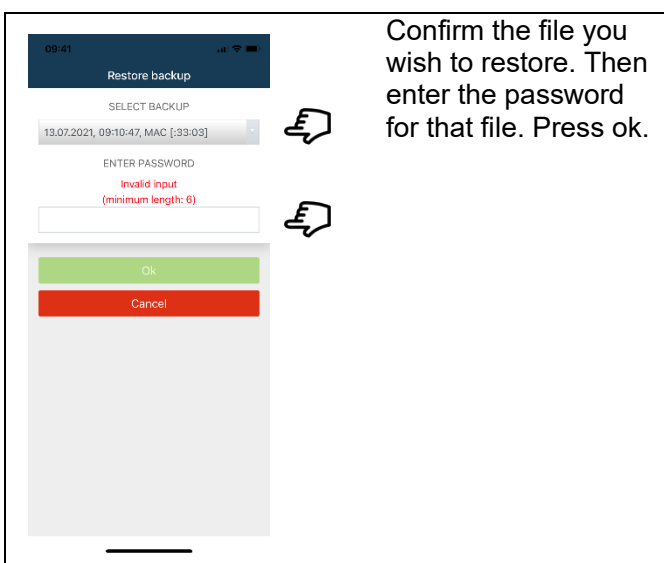
### 9.4



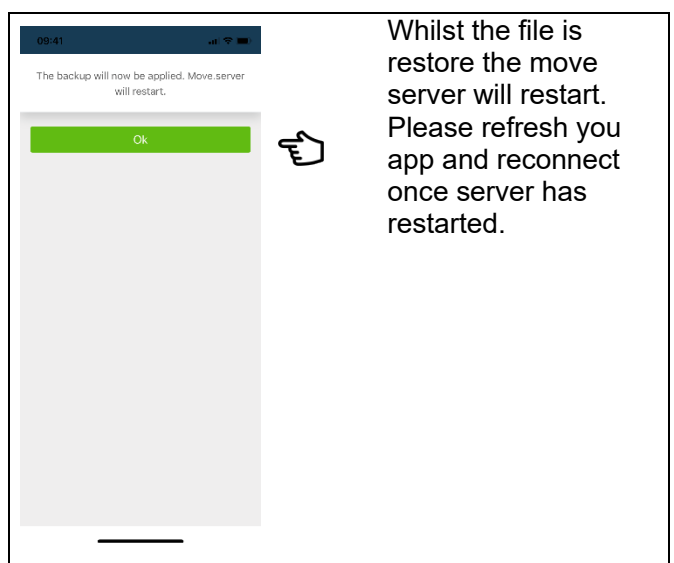
### 9.5



### 9.6



### 9.7



[www.silentgliss.com](http://www.silentgliss.com)