

# JONES

## 50mm Metal Curtain Pole

### Assembly Instructions

#### Before You Start

- We suggest you spend time reading through these instructions before you start.
- Carefully check that you have all the parts, correct tools, and plenty of space before beginning assembly.
- This product should only be used on a solid mounting at point of fixing. (this is necessary to take the weight of the curtain pole including the curtains).
- Due to the size of the product, we recommend that it is assembled in the room intended for use.
- Ensure the product is fully assembled as illustrated and all fixings are fully tightened before use.
- Wipe occasionally with a clean, soft cloth.

#### Number of people required to assemble.

One person who is competent with installation, however we recommend two people assemble this item.

#### Assemble time

50 Minutes.

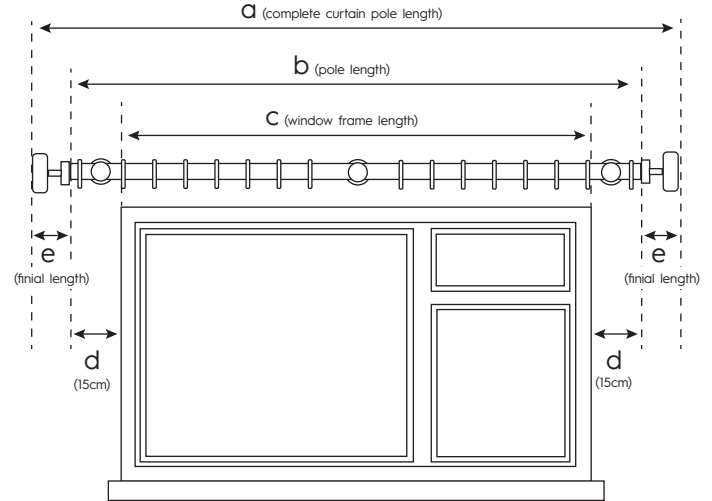
#### Tools required

- Electric Drill with masonry bit
- Cross head screwdriver
- Spirit level and tape measure
- Saw

Please keep out the reach of young children. Small parts are a choking hazard.

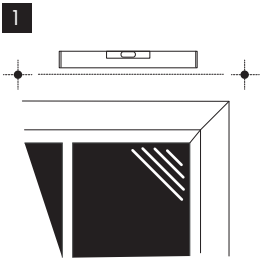
#### Measuring For A Curtain Pole

Window Frame length + 30cm + Finial length = Desired Curtain Pole length

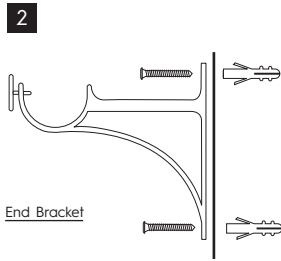


- 1) Measure the window frame that the curtain pole is to go above (shown in figure c).
- 2) Add an extra 30cm (15cm each side) to ensure the curtains clear the window and can be drawn back (shown in figure d). Please note: 15cm is the industry standard however, heavy curtains may require a little more space.
- 3) Allow room for your chosen finial design. (shown in figure e).
- 4) You now know the size of the pole required to fit the window.

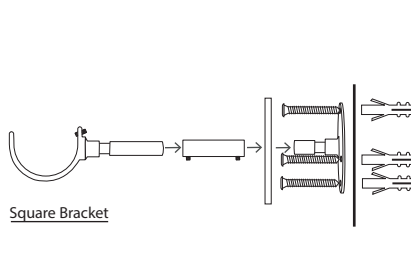
#### Installing Your Curtain Pole



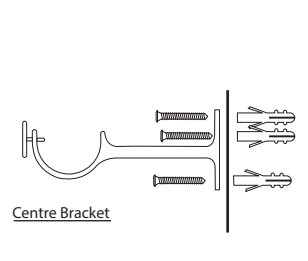
Mark the positions of the end brackets 100mm (approx.) either side of the window frame as well as the centre bracket position for poles longer than 180cm.



End Bracket

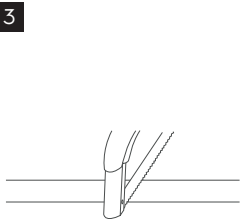


Square Bracket

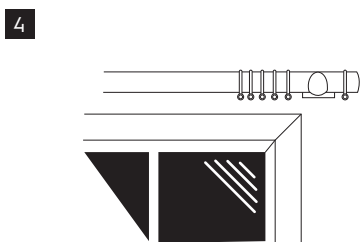


Centre Bracket

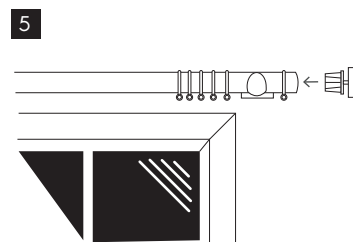
Drill the relevant holes and insert the wall plugs supplied in the pack. Attach the chosen bracket securely in place with the screws provided. When using the square bracket please ensure the grub screws are tightened using the allen key provided.



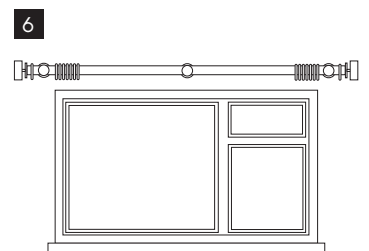
Measure the pole and carefully cut to the required length ensuring not to scratch the pole. When resizing poles using a joiner ensure both poles are cut equally at the finial end.



Slide the rings onto the pole and position the last ring on the outer side of the end bracket before attaching the finials. Tighten the bracket grub screw to hold the pole firmly in place.



Attach the finials by sliding onto the pole and firmly pushing until in position.



The curtain pole is now assembled. Please periodically check all fittings and re-tighten as necessary.