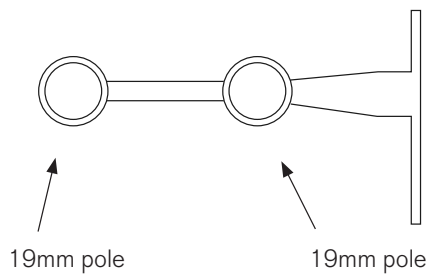


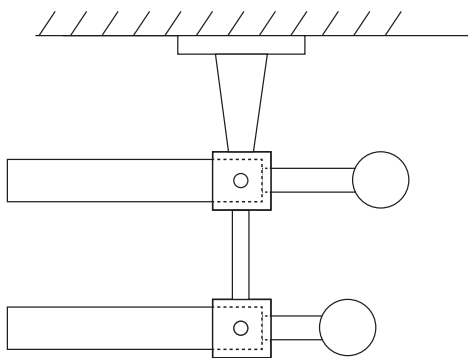
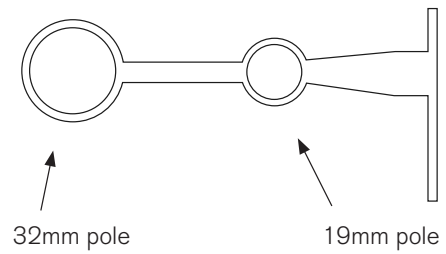
DOUBLE POLE FITTING INSTRUCTIONS

Identify type of system being installed:

19 / 19 SYSTEM

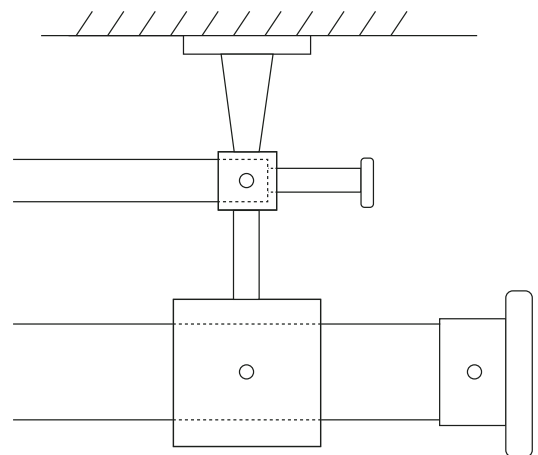
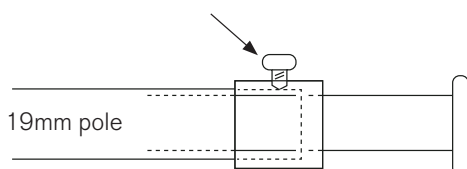


32 / 19 SYSTEM



All 19mm poles should be fitted so that the pole ends within the bracket. The grub screw tightens up on the pole causing it to grip the finial.

Grub screw **DOES NOT** grip finial



32mm pole only
Grub screw grips pole