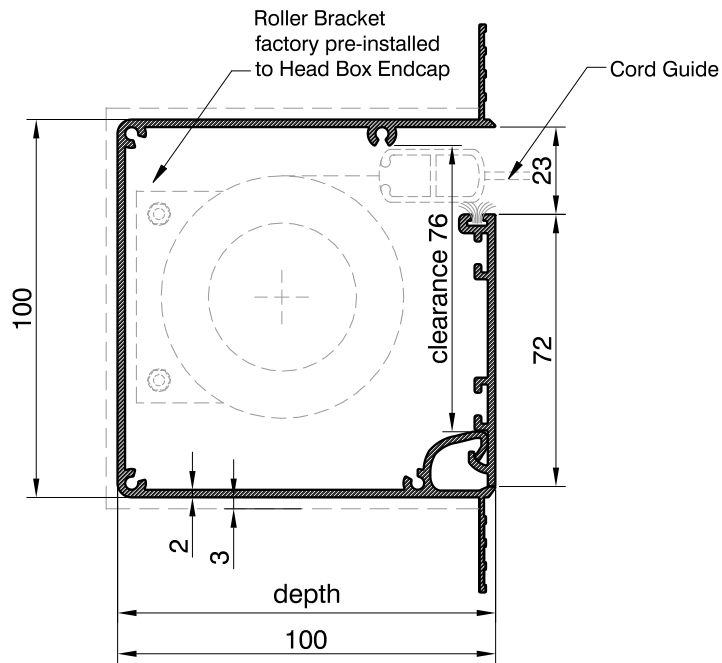
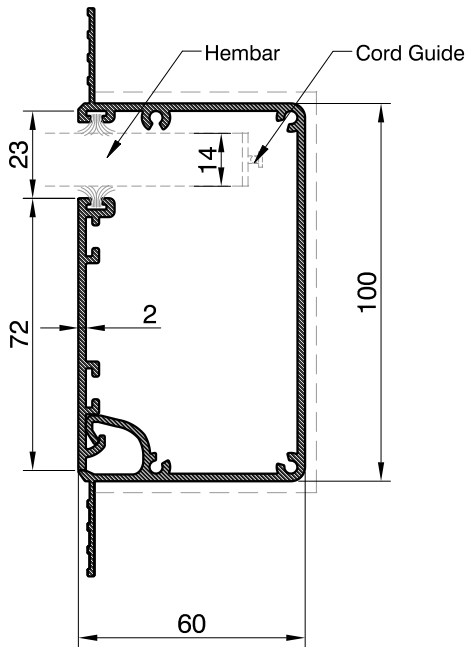


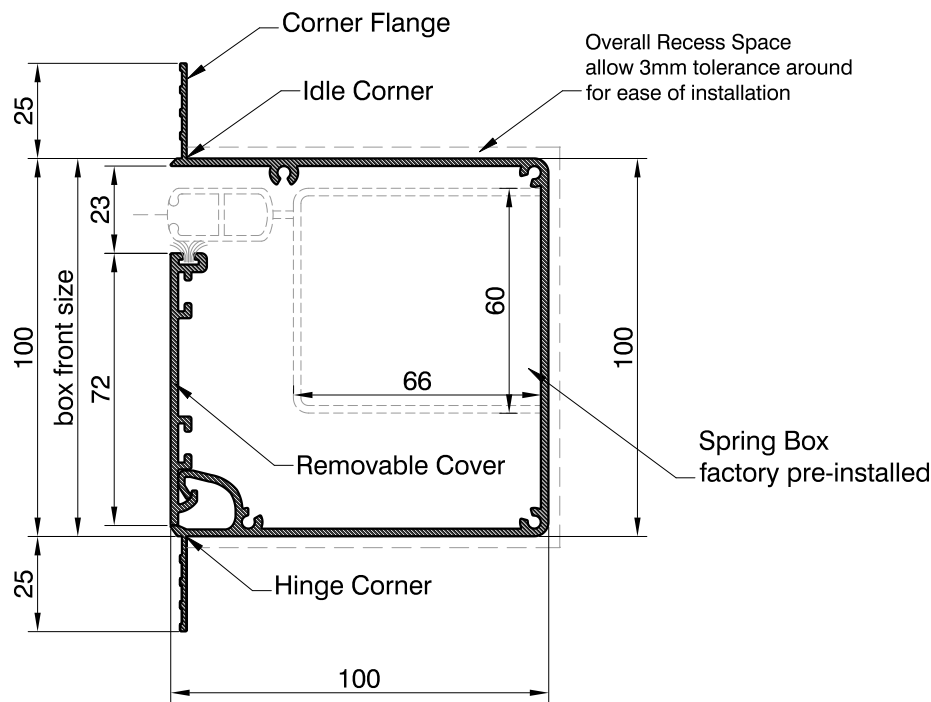
Blindspace® S100x100 & S100x60 with brushes
for Farnborough Easy Fix System



S100x100 R
Head Box

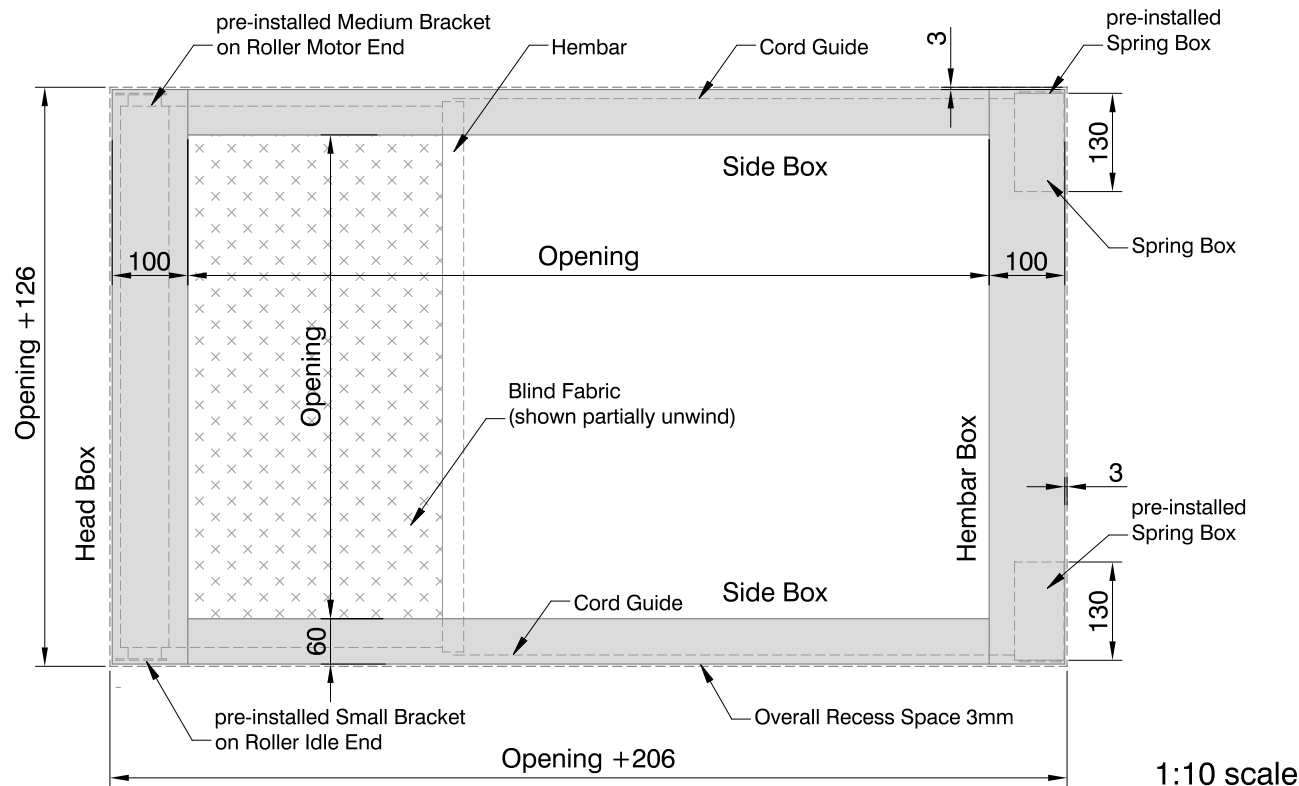


S100x60 R(BH)
Side Box



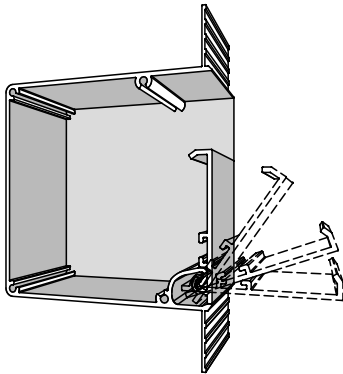
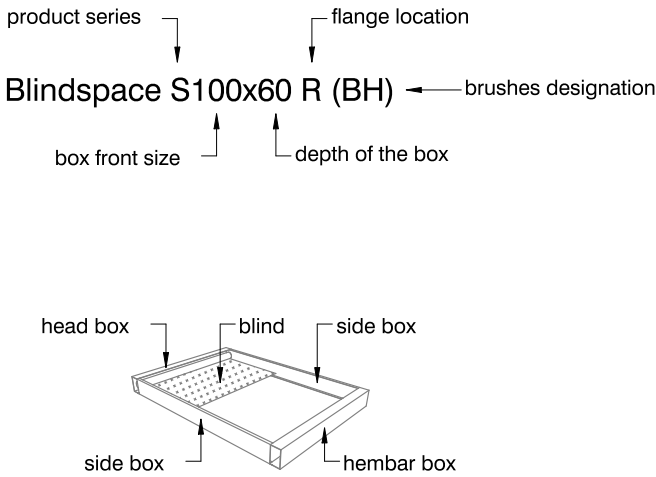
S100x100 R
Hembar Box 1:2 scale

SYSTEM LAYOUT



1:10 scale

PRODUCT REFERENCE



Product	Blindspace S100x100
Description	Recessed extruded aluminium boxes and covers set designed to conceal rooflights blinds.
Material	Anodized Aluminium, grade: EN 6063 T6
Finishes	- Unfinished for site painting - Primed for site painting - Pre-finished to RAL colour
Blind sizes	Blind Sizes to fit inside the box: Farnborough Blinds Easy Fix System Opening Width max: 1500mm Opening Length max: 3000mm Max area: 3.0m²
Installation	System comes as pre-installed set. The finished plaster level should be flush with chamfered edge. Anchoring countersink screws through skim coat flanges are recommended.
Drawing	Standard Blindspace Boxes Set S100x100 with Brush Holders for Rooflight Blinds
Item name	S100x100R, S100x60R(BH)
Date	November, 2019
Notes	Dimensions in mm Do not scale from drawing
Drawn by	M. Kozak, B. Dzieza
Approved	A. Sundelin
Revision	R-0: first issue

Print date	2019-11-4
Print file	blindspace s100x100 for rooflights with easy fix system v05.dwg
Page size	ISO A3 420x297
Remarks	ZRE, factory pre-installed hardware delivered as assembled set