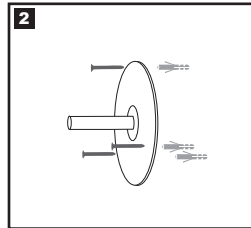
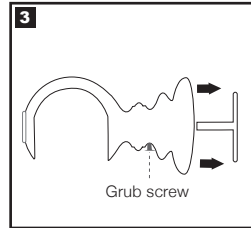


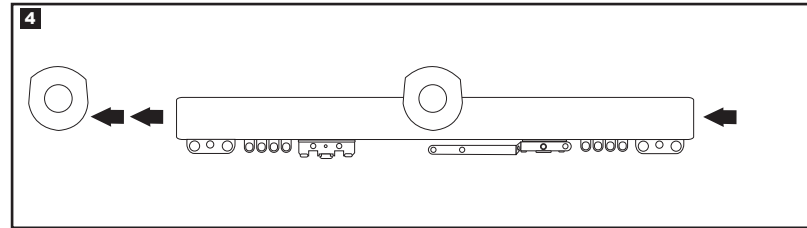
Un-screw the grub screw and remove the back plate from the bracket.



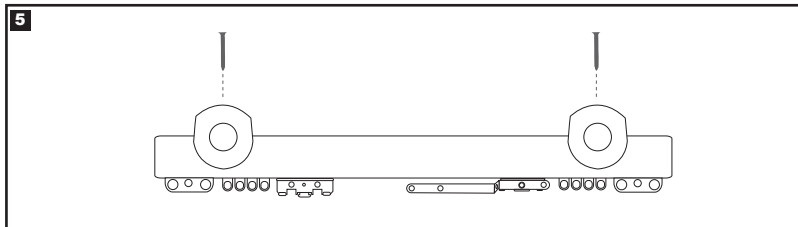
Attach the back plates to the wall using the screws provided.



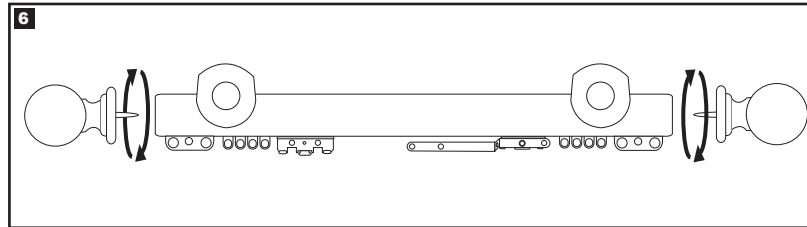
Push the bracket onto the back plate ensuring the bracket is left with the cup facing down. Secure in place by tightening the grub screw underneath.



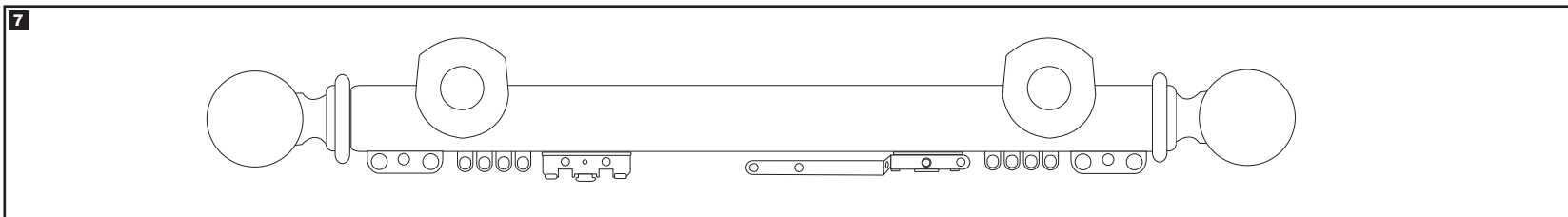
Slide the pole on to the brackets.



Attach the securing screws through the bracket locking the pole in position.



Fit the finials by screwing them onto the end of the pole.



Your Handcrafted Pole Track is now installed. To takedown the pole simply reverse the procedure.



WARNING

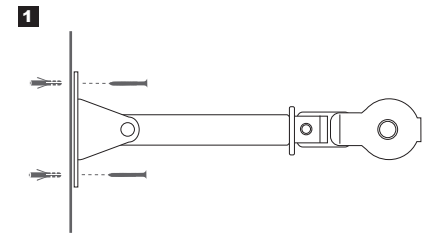
Young children can be strangled by the loops in pull cords, chains, tapes and inner cords that operate this product.

To avoid strangulation and entanglement, keep cords and chains out of the reach of young children. Cords may become wrapped around a child's neck.

Move cots and furniture away from window covering cords. Do not tie cords together. Make sure cords do not twist and create a loop.

Corded Pole (only)

Safety Tension Pulley



Measure and secure the tension cord pulley in place using the screws provided.

